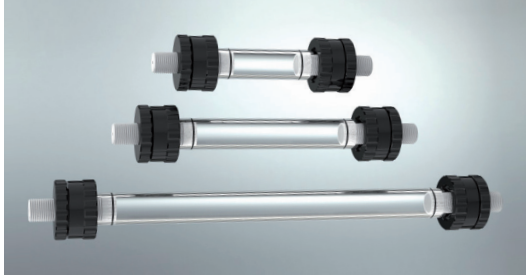


Do you need a new glass column for self-packing?

Choose your new glass column from the wide range of ECO and ECO^{PLUS} columns.



ECO glass columns

- 10, 15, 25, 50, 70, 80 mm inner diameters
- 120, 200, 450, 750, 1000 mm max. bed lengths
- Pressure limit 30–5 bar

ECO^{PLUS} glass columns

- 5, 10, 15, 25, 35, 50 mm inner diameters
- 125, 250, 500 mm max. bed lengths
- Pressure limit 80–15 bar

Two versions available:

- Solvent resistant (SR) and
- Aqueous buffers (AB)

Wide range of volumes and bed lengths are possible.

For more information and brochures about the two glass column ranges, visit

www.ymc.eu

YMC Europe GmbH

Schöttmannshof 19
Germany-46539 Dinslaken

Phone: +49 (0) 2064 427-0

Fax: +49 (0) 2064 427-222

Email: info@ymc.eu

www.ymc.eu



Handling-Loop Manual

Note: Please read before using.

Handling-Loop for YMC glass columns

This tool helps you to open and close your YMC glass columns. The Handling-Loop is universally applicable to all available inner diameters of the ECO and ECO^{PLUS} glass column ranges. Please note: For ECO glass columns with 70 and 80 mm ID, the Handling-Loop replaces the “strap wrench”.

Below, you will find advice on how to use the Handling-Loop correctly.



Advantages of the Handling-Loop

- ✓ Simplified opening of glass columns
- ✓ Universally applicable
- ✓ Easy grip especially with larger inner diameters

Order information

Product number: Handling-Loop

Universal strap wrench for ECO and ECO^{PLUS} columns
(ID 5 – 80 mm)

Initial operation of your Handling-Loop

1. Assembly of the Handling-Loop

- a. Insert the loose end of the rubber band into the duct.
- b. Put the rubber loop loosely around the counter screw.



2. Tightening of the Handling-Loop

- a. Fix the Handling-Loop by pulling on the loose end of the rubber band.



3. Opening and closing of glass columns

For opening or closing the column, hold the counter screw and twist the Handling-Loop towards the direction of the arrow.

- a. **To open:** Twist the Handling-Loop counter clockwise.



again around the counter screw.
Twist the Handling-loop clockwise.

