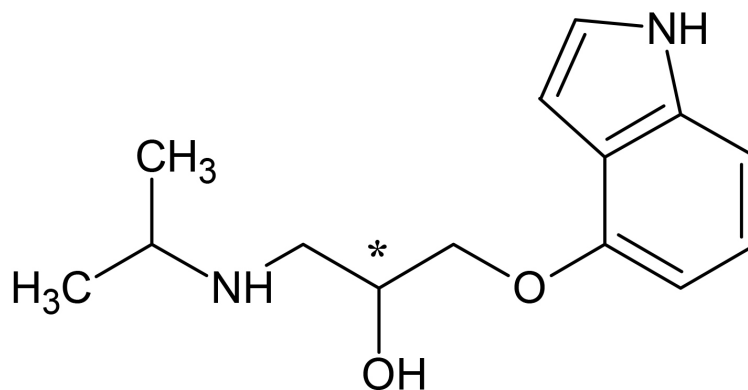


## Chiral separation of beta blocker pindolol enantiomers

Pindolol is a non-selective beta-blocker used for treatment of hypertension and angina pectoris. It is applied as a racemate, although only the (S)-form is the active stereoisomer.



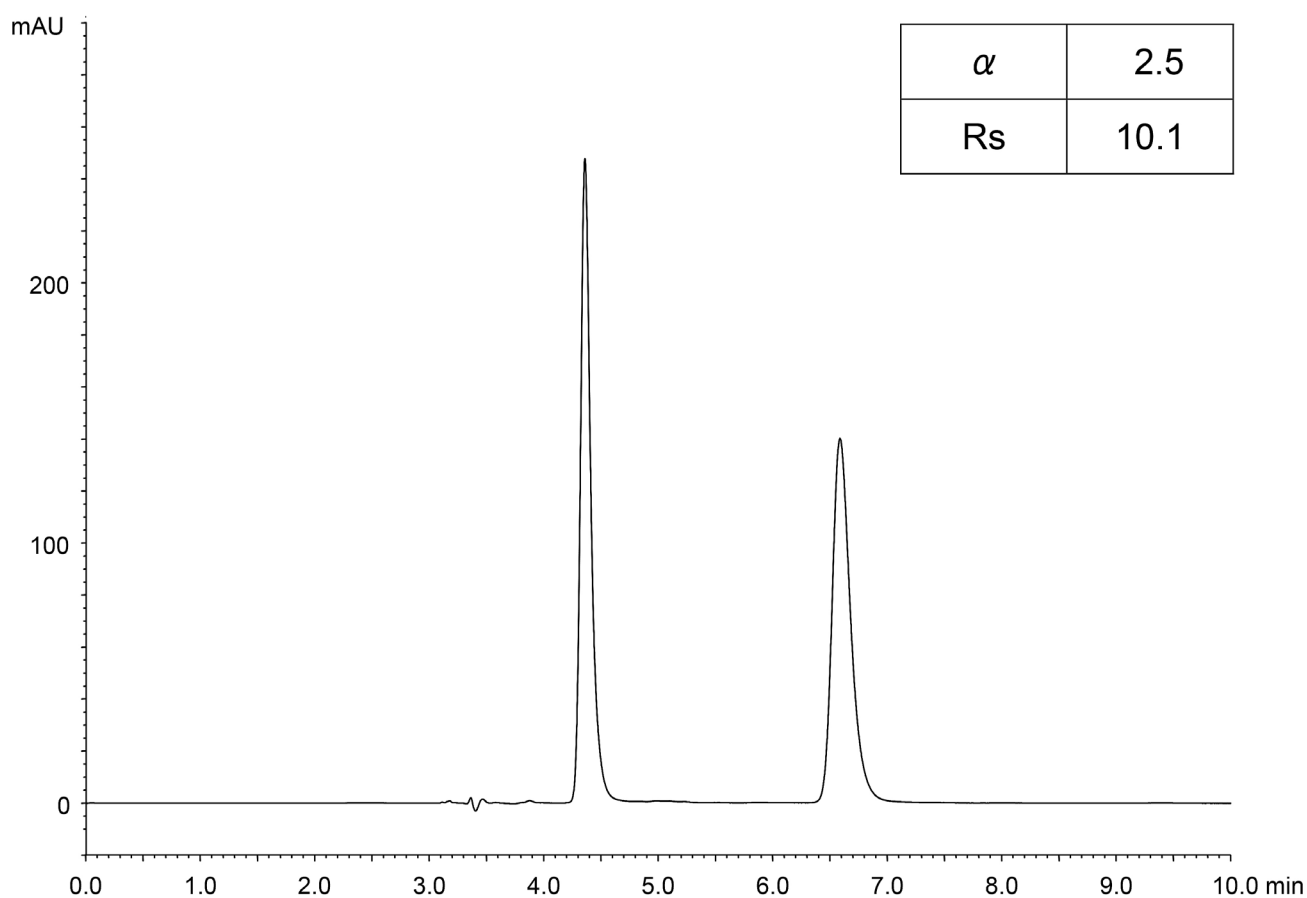
YMC offers immobilised chiral phases that can be used either in normal or reversed phase mode as well as in SFC mode. CHIRAL ART Cellulose-SC is a very versatile phase to separate many chiral substances. YMC have developed two isocratic applications to separate the pindolol enantiomers in NP or RP mode. Both methods offer a high resolution. The NP application provides more potential for a preparative scale up, while the RP approach separates the enantiomers in a shorter time.



Pindolol

## Chiral separation of beta blocker pindolol enantiomers

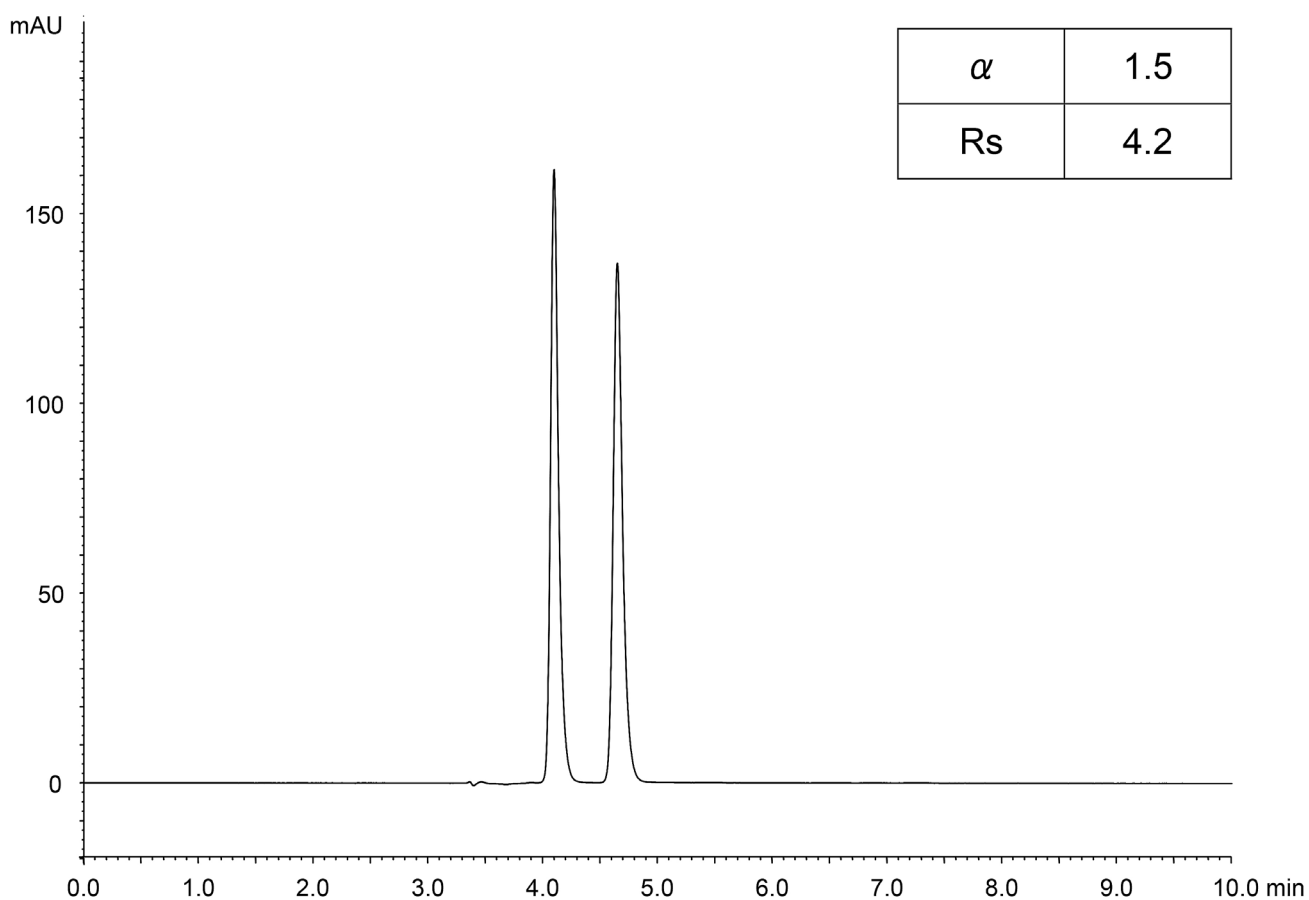
### Normal phase method



Column: CHIRAL ART Cellulose-SC, 5  $\mu$ m, (250 x 4.6 mm ID)  
 Part No.: KSC99S05-2546WT  
 Eluent: n-hexane / ethanol / diethylamine (40/60/0.1)  
 Flow rate: 1.0 mL/min  
 Detection: UV at 265 nm  
 Injection: 10  $\mu$ l (100  $\mu$ g/ml)  
 Temperature: 25°C

## Chiral separation of beta blocker pindolol enantiomers

### Reversed phase method



Column: CHIRAL ART Cellulose-SC, 5  $\mu\text{m}$ , (250 x 4.6 mm ID)  
 Part No.: KSC99S05-2546WT  
 Eluent: methanol / diethylamine (100/0.1)  
 Flow rate: 1.0 mL/min  
 Detection: UV at 265 nm  
 Injection: 10  $\mu\text{l}$  (100  $\mu\text{g/ml}$ )  
 Temperature: 25°C