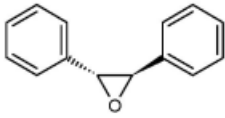
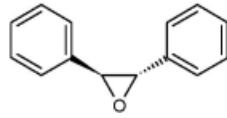


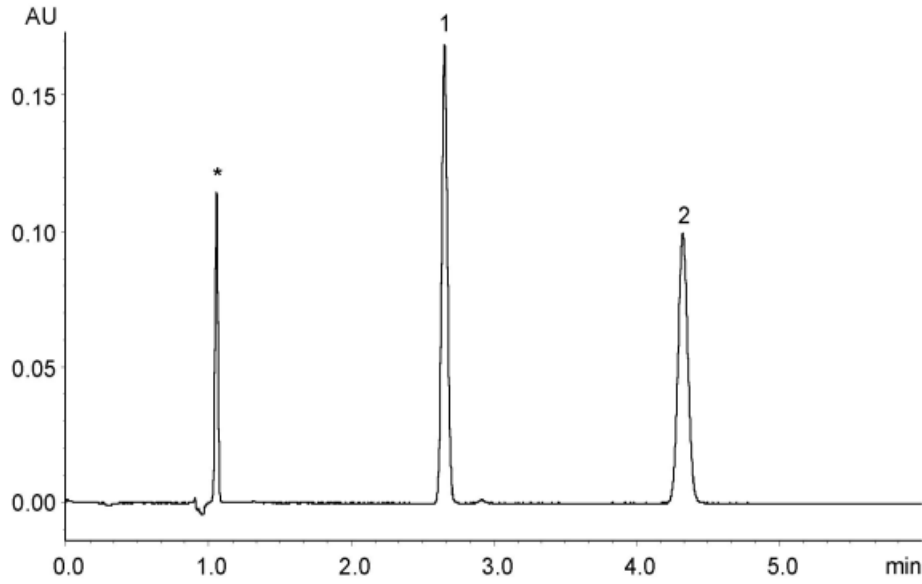
1

(+)-*R,R*-*trans*-Stilbene oxide

2

(-)-*S,S*-*trans*-Stilbene oxide

α	2.0
Rs	17.0

* Toluene (0.5 μ L/mL, t_0 marker)

Column : Alcyon SFC CSP Amylose-C Neo (5 μ m)
 250 X 4.6 mm I.D.
 Eluent : CO₂/methanol (80/20)
 Flow rate : 3.0 mL/min
 Temperature : 40°C
 Detection : UV at 220 nm
 Backpressure : 13.8 MPa (2000 psi)
 Injection : 5 μ L (0.1 mg/mL)