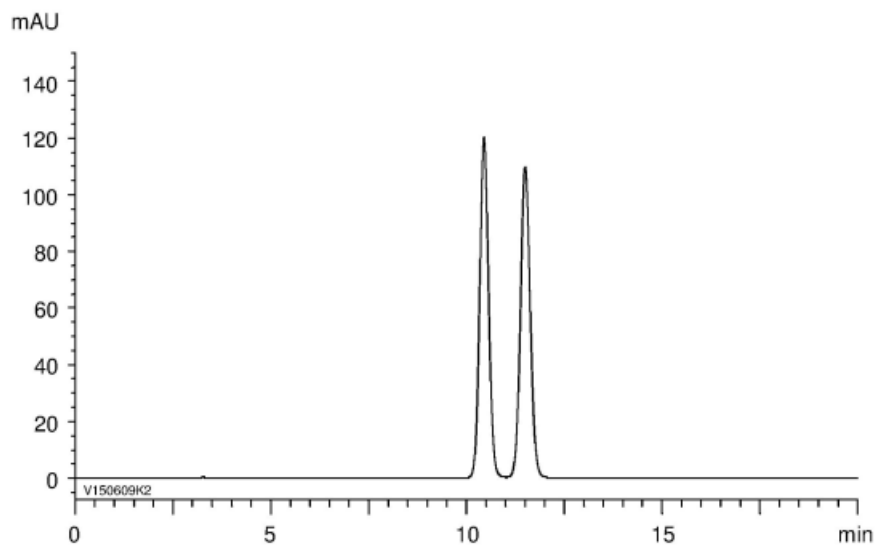


α	1.1
Rs	2.4



Column : CHIRAL ART Cellulose-SC (5 μ m)
250 X 4.6 mm I.D.
Eluent : *n*-hexane/2-propanol/TFA (90/10/0.1)
Flow rate : 1.0 mL/min
Temperature : 25°C
Detection : UV at 254 nm
Injection : 10 μ L (0.1 mg/mL)