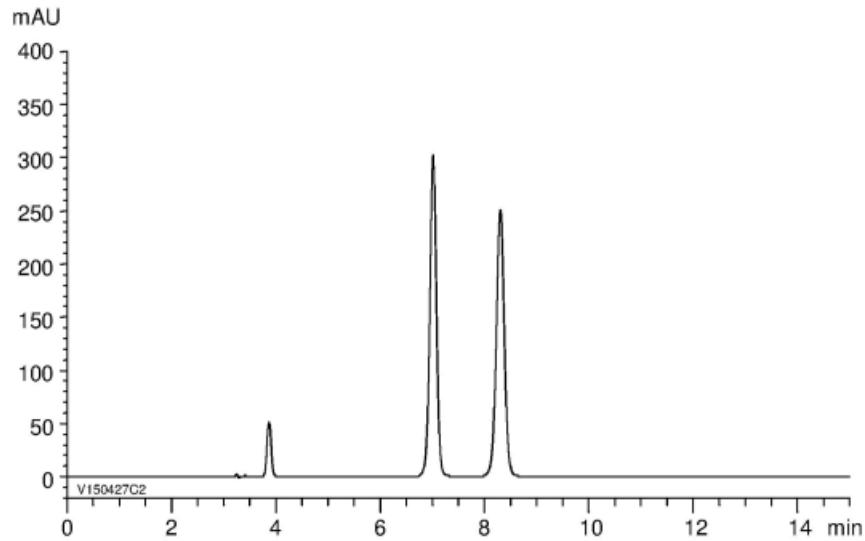


$\alpha$	1.3
Rs	5.1



Column : CHIRAL ART Amylose-SA (5  $\mu$ m)  
 250 X 4.6 mm I.D.  
 Eluent : *n*-hexane/2-propanol/TFA (95/5/0.1)  
 Flow rate : 1.0 mL/min  
 Temperature : 25°C  
 Detection : UV at 254 nm  
 Injection : 10  $\mu$ L (0.1 mg/mL)