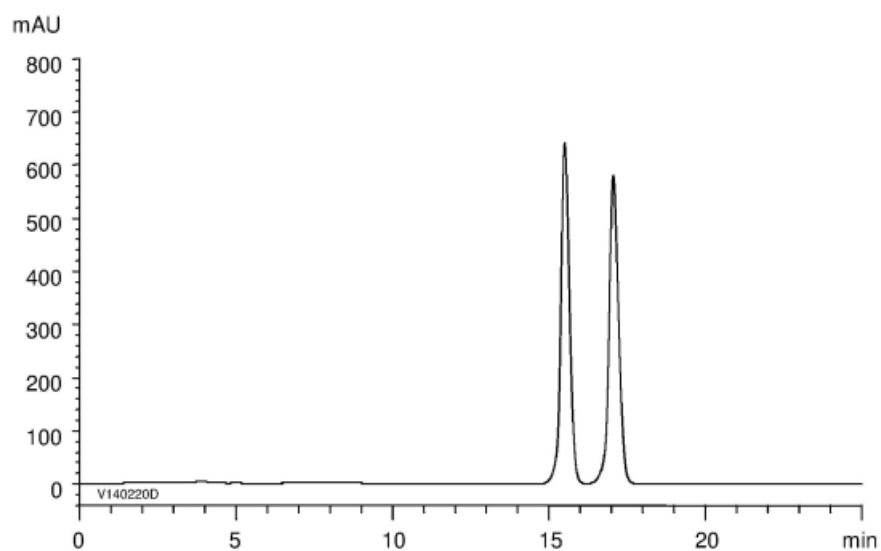


$\alpha$	1.1
Rs	3.0



Column : CHIRAL ART Cellulose-SB (5  $\mu$ m)  
 250 X 4.6 mm I.D.  
 Eluent : *n*-hexane/2-propanol/TFA (99/1/0.1)  
 Flow rate : 1.0 mL/min  
 Temperature : 25°C  
 Detection : UV at 220 nm  
 Injection : 10  $\mu$ L (1 mg/mL)