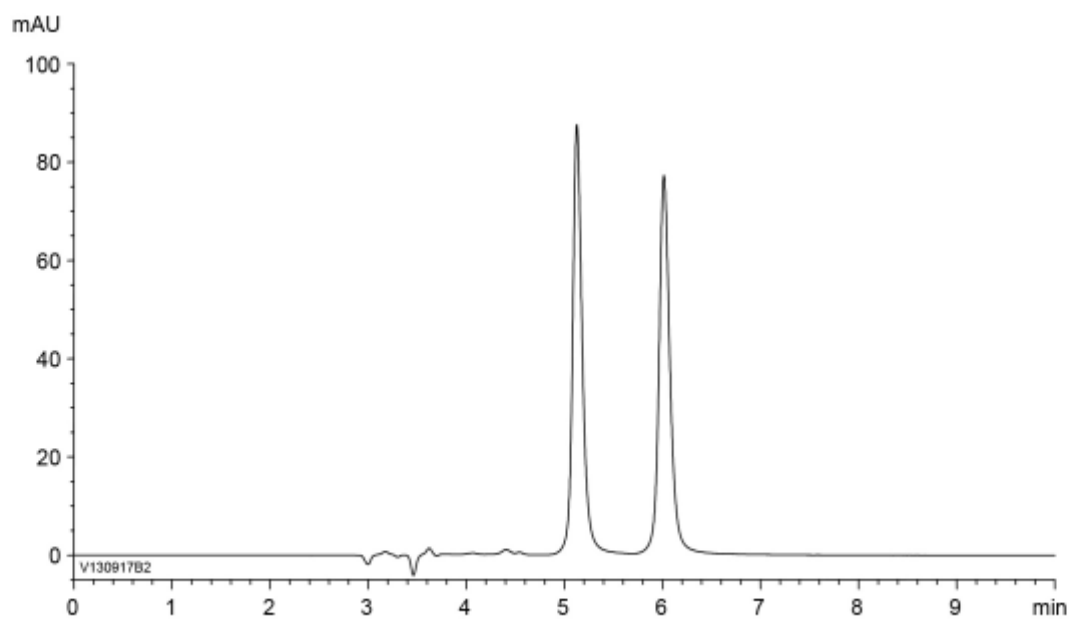


| | |
|----------|-----|
| α | 1.4 |
| R_s | 5.1 |



Column : YMC CHIRAL Cellulose-C (5 μ m)
250 X 4.6 mm I.D.
Eluent : *n*-hexane/2-propanol/TFA (80/20/0.1)
Flow rate : 1.0 mL/min
Temperature : 25°C
Detection : UV at 254 nm
Injection : 20 μ L (1 mg/mL)