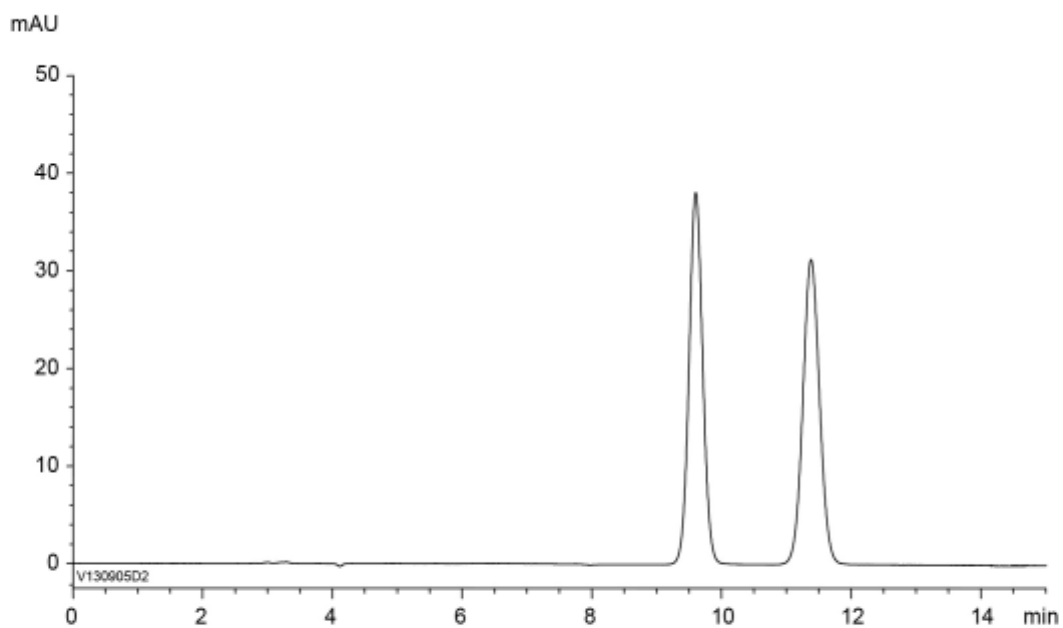


$\alpha$	1.3
$R_s$	4.2



Column : YMC CHIRAL Amylose-C (5  $\mu$ m)  
 250 X 4.6 mm I.D.  
 Eluent : *n*-hexane/2-propanol/diethylamine (90/10/0.1)  
 Flow rate : 1.0 mL/min  
 Temperature : 25°C  
 Detection : UV at 254 nm  
 Injection : 10  $\mu$ L (1 mg/mL)