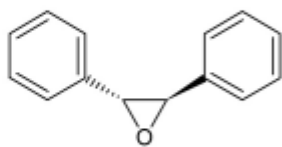
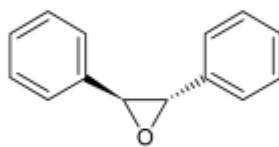


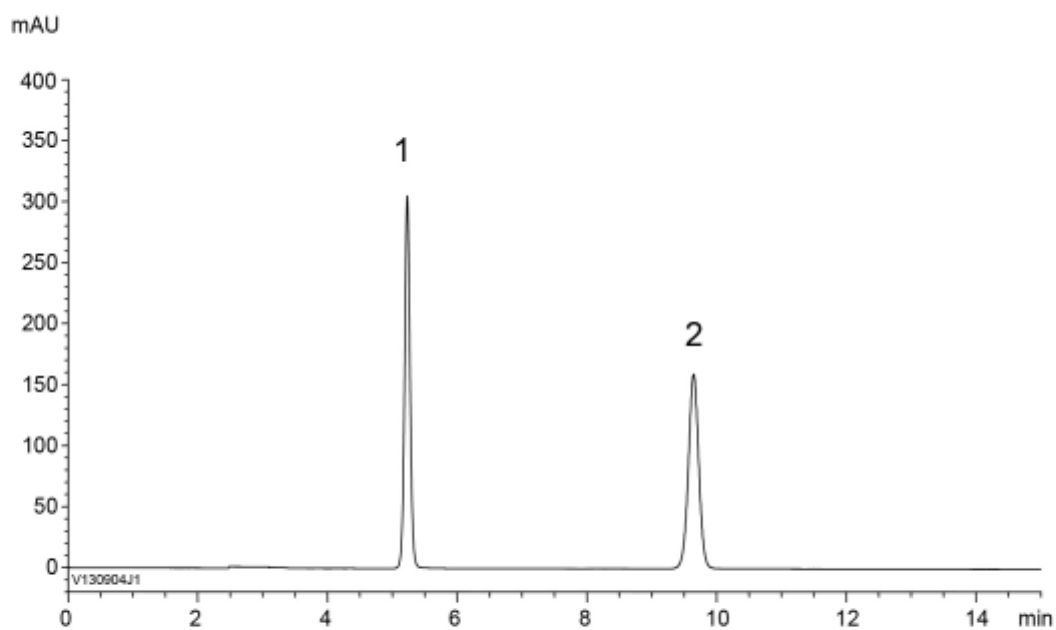
1

(+)-*R,R*-*trans*-Stilbene oxide

2

(-)-*S,S*-*trans*-Stilbene oxide

α	2.9
R_s	20.4



Column : YMC CHIRAL Amylose-C (5 μ m)
 250 X 4.6 mmI.D.
 Eluent : *n*-hexane/2-propanol (90/10)
 Flow rate : 1.0 mL/min
 Temperature : 25°C
 Detection : UV at 230 nm
 Injection : 5 μ L (0.1 mg/mL)