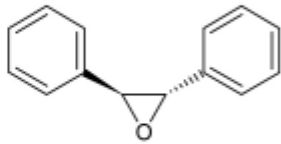
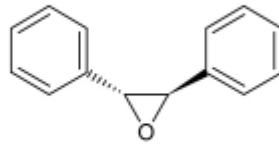


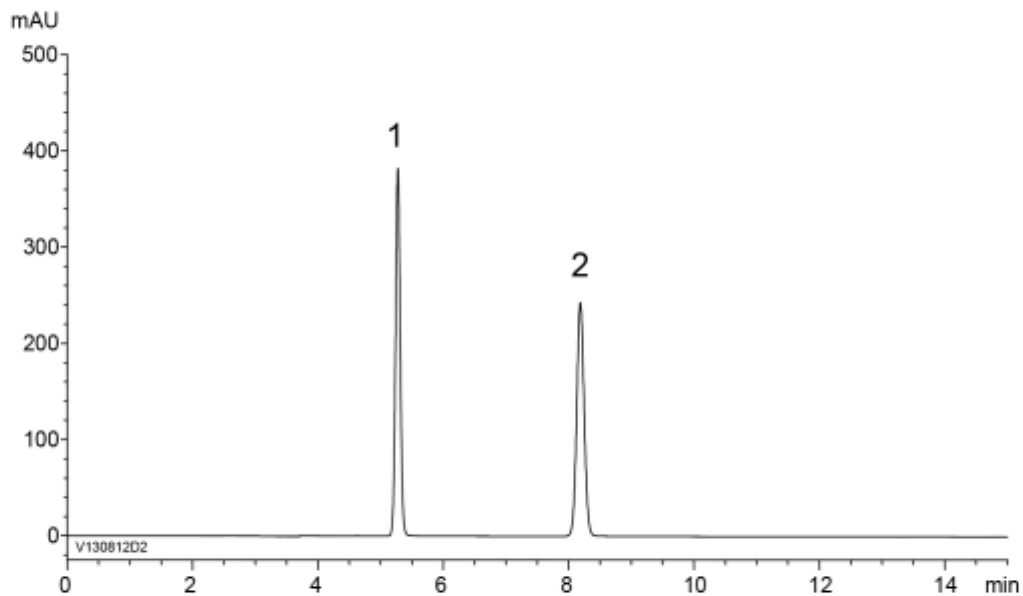
1

(-)-*S,S*-*trans*-Stilbene oxide

2

(+)–*R,R*-*trans*-Stilbene oxide

$\alpha$	2.3
$R_s$	16.8



Column : YMC CHIRAL Cellulose-C (5  $\mu$ m)  
 250 X 4.6 mmI.D.  
 Eluent : *n*-hexane/2-propanol (90/10)  
 Flow rate : 1.0 mL/min  
 Temperature : 25°C  
 Detection : UV at 230 nm  
 Injection : 5  $\mu$ L (0.1 mg/mL)