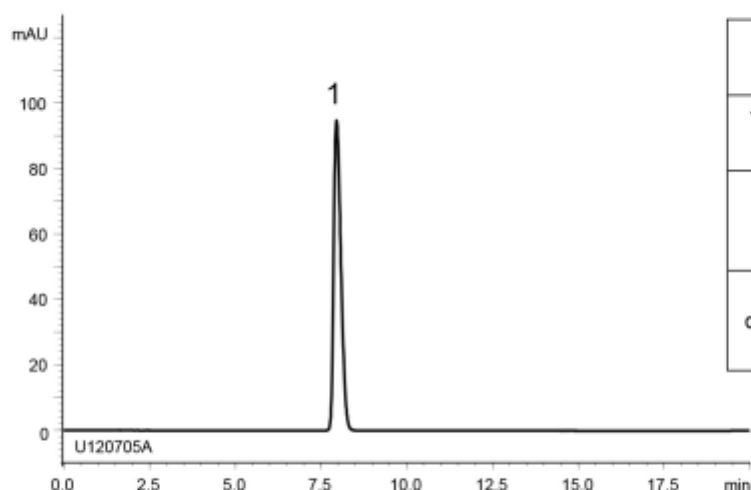
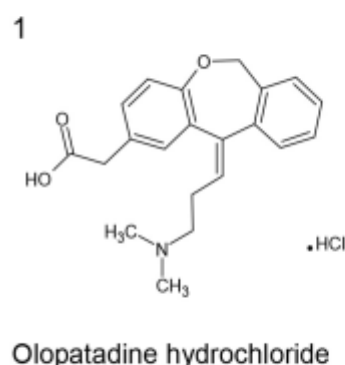
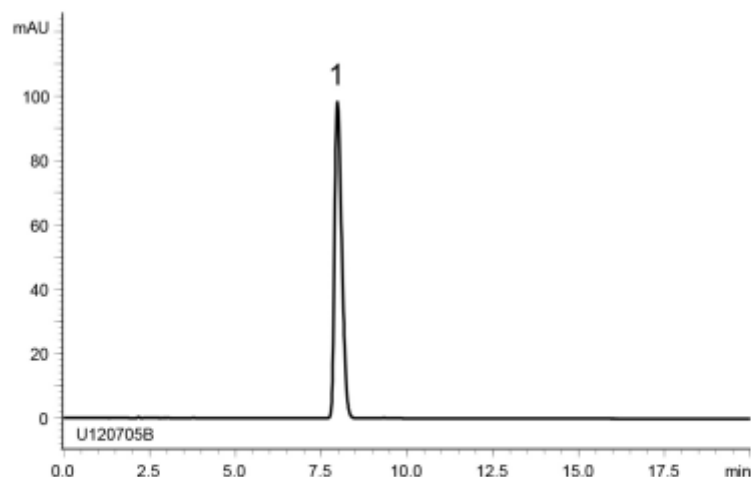


A) Standard solution*¹
(0.1 mg/mL Olopatadine HCl)



	System suitability requirement	Result
Theoretical plate number (Olopatadine)	≥ 2000	6700
Tailing factor (Olopatadine)	≤ 2.0	1.43
Relative standard deviation of the peak area (Olopatadine)	≤ 2.0%	0.26%

B) Sample solution*¹
(0.1 mg/mL Olopatadine HCl)



Column : YMC-Triart C8 (5 μm, 12 nm)
150 X 4.6 mm I.D.

Eluent : phosphate buffer (pH 3.0)*²/acetonitrile (18/7)
² Dissolve 13.6 g of KH_2PO_4 in 1000 mL of water, add 1 mL triethylamine, adjust pH 3.0 with H_3PO_4

Flow rate : 1.0 mL/min

Temperature : 25°C

Detection : UV at 299 nm

Injection : 30 μL

(The United States Pharmacopeia 34th; Assay)

*¹ Standard solution was prepared from Olopatadine hydrochloride supplied as a reagent for laboratory use.
Sample solution was prepared from Olopatadine hydrochloride ophthalmic solution.