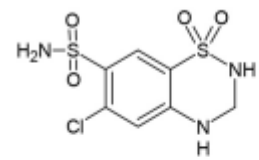
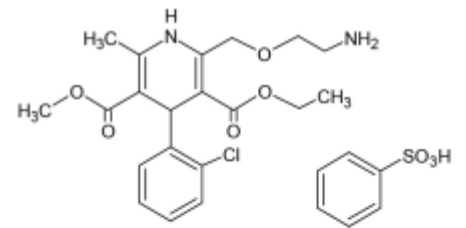


1



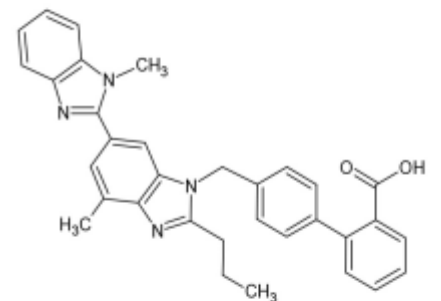
Hydrochlorothiazide

2

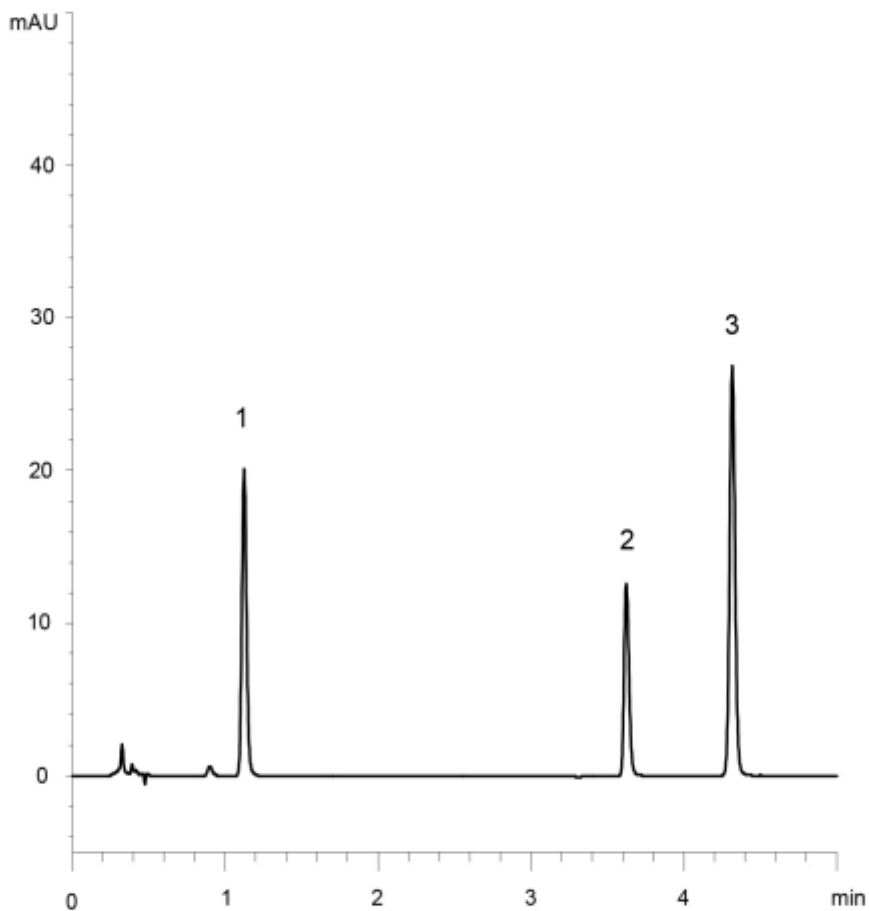


Amlodipine besilate

3



Telmisartan



Column	: YMC-Triart C8 (3 μm, 12 nm) 50 X 2.0 mm I.D.
Eluent	: A) 10 mM CH ₃ COONH ₄ -CH ₃ COOH (pH 5.0) B) acetonitrile 10-50%B (0-5 min)
Flow rate	: 0.4 mL/min
Temperature	: 30°C
Detection	: UV at 254 nm
Injection	: 2 μL (10~20 μg/mL)