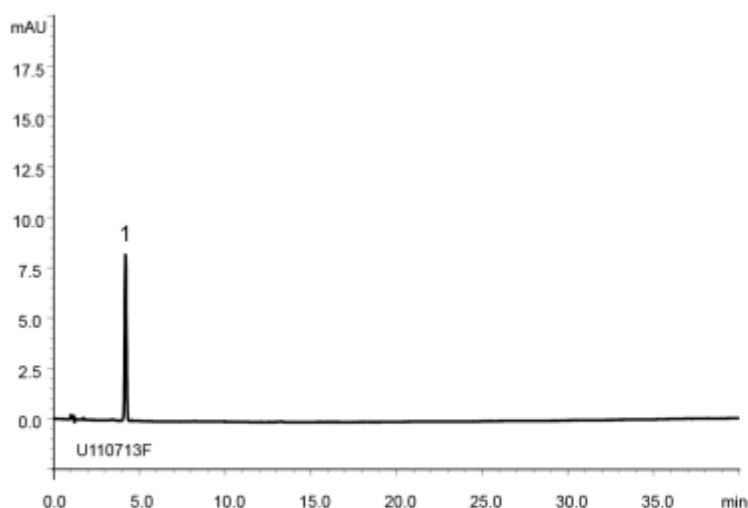
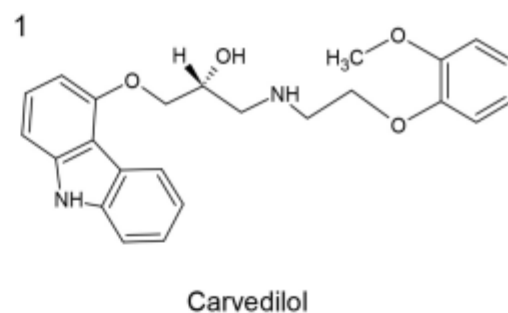
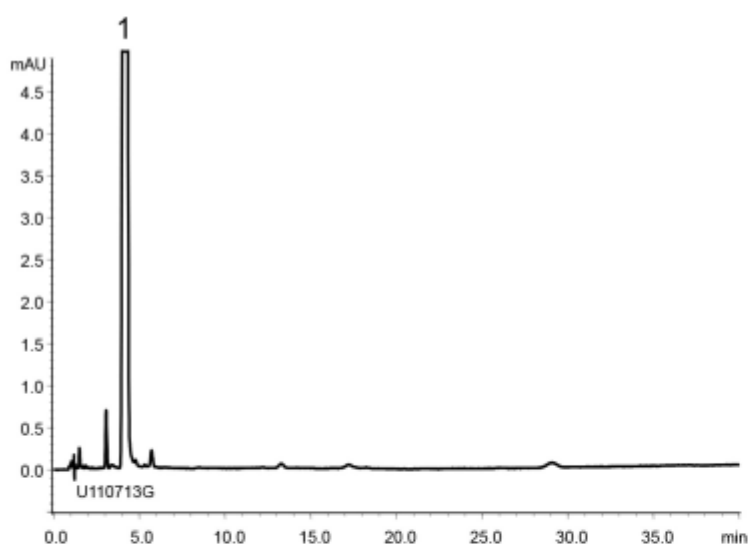


A) Standard solution
(0.00065 mg/mL Carvedilol)



	System suitability requirement	result
Theoretical plate number (Carvedilol)	≥ 6000	8800
Tailing factor (Carvedilol)	≤ 1.5	1.11

B) Sample solution
(0.065 mg/mL Carvedilol)



Column	: YMC-Triart C8 (5 μ m, 12 nm) 150 X 4.6 mm I.D.
Eluent	: phosphate buffer (pH 2.0)* / acetonitrile (65/35) *Dissolve 2.72 g of KH_2PO_4 in 900 mL water, adjust pH 2.0 with H_3PO_4 and add water to make 1000 mL
Flow rate	: 1.4 mL/min (adjust the flow rate so that the retention time of carvedilol is about 4 min)
Temperature	: 55°C
Detection	: UV at 240 nm
Injection	: 20 μ L
(The Japanese Pharmacopoeia 16th; Related substances)	