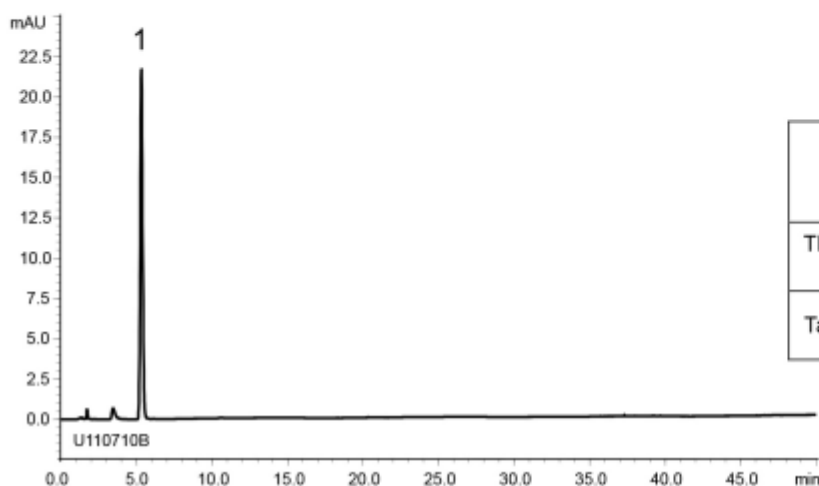


A) Standard solution

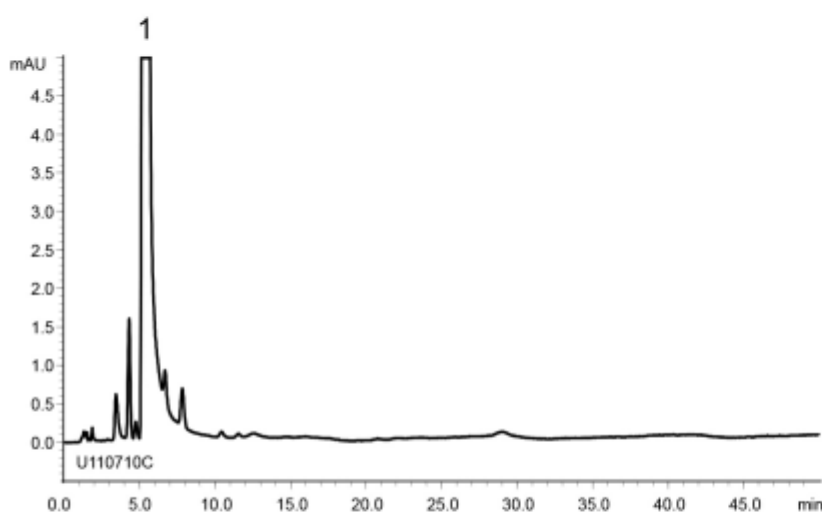
(0.00125 mg/mL Carvedilol)



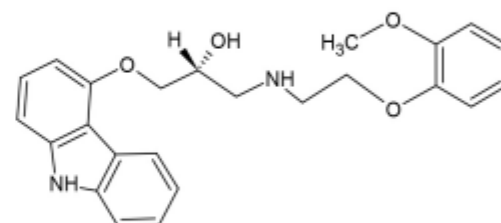
	System suitability requirement	result
Theoretical plate number (Carvedilol)	≥ 3000	5500
Tailing factor (Carvedilol)	≤ 2.0	1.14

B) Sample solution

(0.125 mg/mL Carvedilol)



1



Carvedilol

- Column : YMC-Triart C18 (5 μ m, 12 nm)
150 X 4.6 mm I.D.
- Eluent : 20 mM KH₂PO₄-K₂HPO₄ (pH 5.0)/methanol (45/55)
- Flow rate : 1.2 mL/min (*adjust the flow rate so that the retention time of carvedilol is about 5 min*)
- Temperature : 40°C
- Detection : UV at 240 nm
- Injection : 50 μ L

(The Japanese Pharmacopoeia 16th; Related substances)