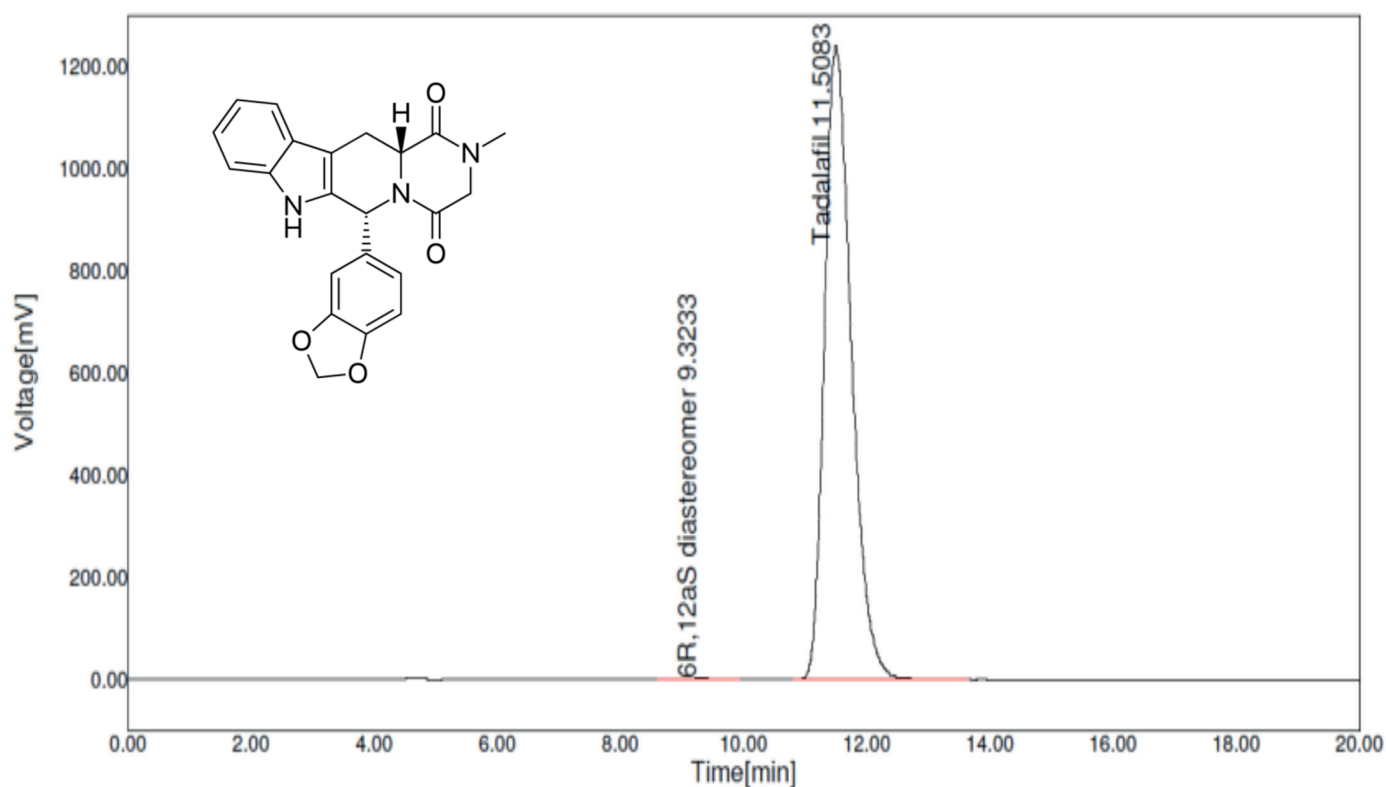


Application Note

YMC
EUROPE GMBH

Tadalafil**



Column: CHIRAL ART Amylose-C 5 μ m (250 x 4.6 mm ID)
Part No.: KAN99S05-2546WT
Eluent: *n*-hexane/2-propanol (50/50)
Flow rate: 0.75 mL/min
Temperature: 30°C
Detection: UV at 222 nm
Injection: 10 μ L (0.5 mg/mL in *n*-hexane/2-propanol/acetonitrile (40/40/20))

**Application data by courtesy YMC India Pvt. Ltd.