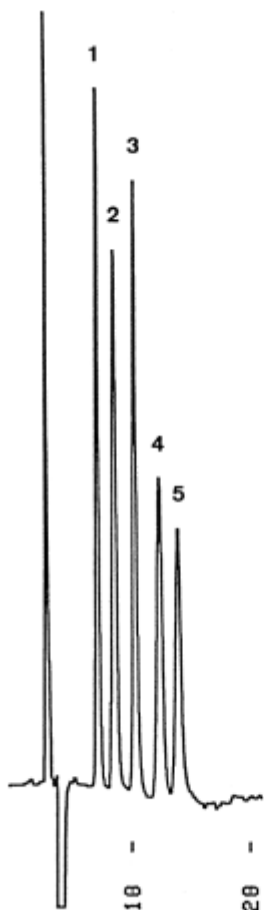


1. Fructose
2. Glucose
3. Sucrose
4. Maltose
5. Lactose



Column : YMC-Pack Polyamine II
250 × 4.6 mm I.D.
Eluent : ethanol/ethyl acetate/acetonitrile/water (30/40/5/25)
Flow rate : 1.0 mL/min
Temperature : 35 °C
Detection : RI, 32×10^{-6} RIU/FS
Injection : 5 μ L (14.3~28.6 mg/mL)