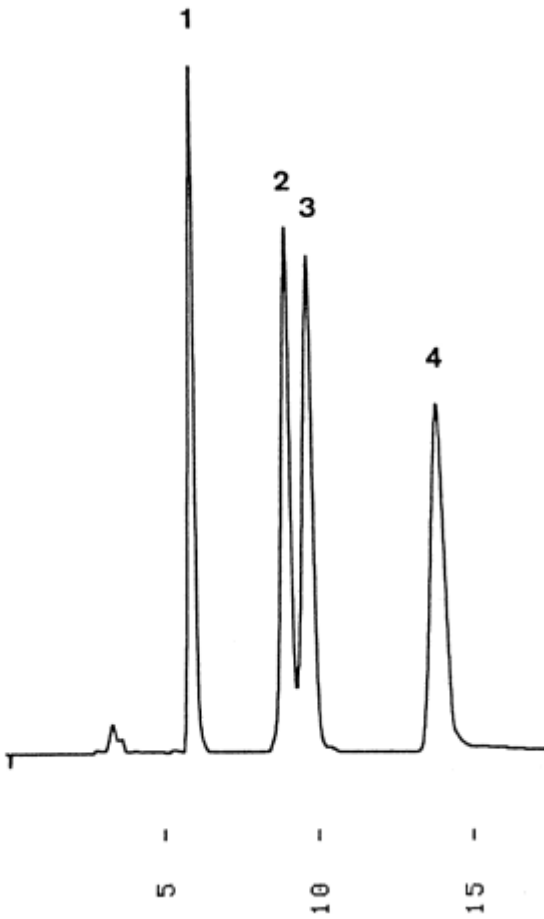


1. α -Tocopherol
2. β -Tocopherol
3. γ -Tocopherol
4. δ -Tocopherol



Column : YMC-Pack Polyamine II
250 × 4.6 mm I.D.
Eluent : n-hexane/tetrahydrofuran/acetic acid/water (93/7/0.4/0.01)
Flow rate : 1.0 mL/min
Temperature : 30 °C
Detection : UV at 295 nm, 0.08 AUFS
Injection : 7 μ L (0.25 mg/mL)