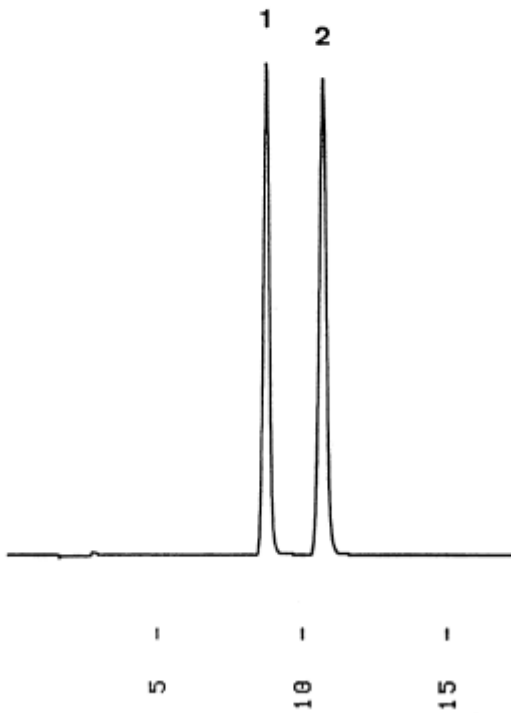


1. Erythorbic acid
2. L-Ascorbic acid (Vitamin C)



Column : YMC-Pack Polyamine II  
250 × 4.6 mm I.D.  
Eluent : acetonitrile/50mM NH<sub>4</sub>H<sub>2</sub>PO<sub>4</sub> (70/30)  
Flow rate : 1.0 mL/min  
Temperature : 30 °C  
Detection : UV at 250 nm, 0.16 AUFS  
Injection : 10 μL (0.1 mg/mL)