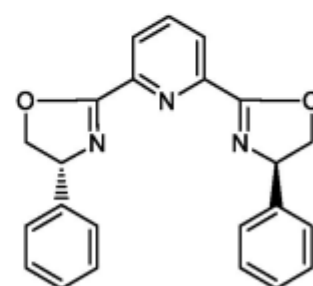
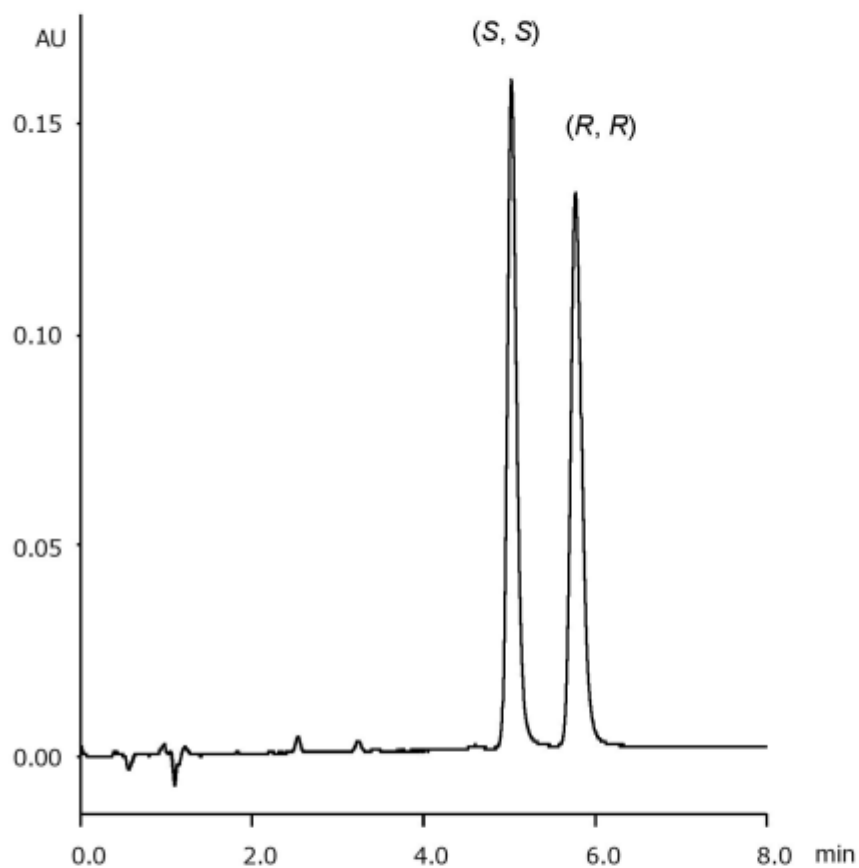
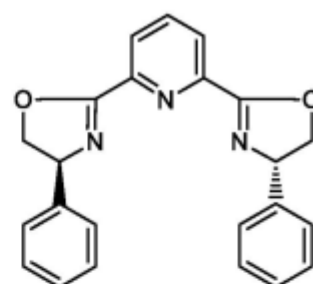


α	1.2
R_s	3.5



(R, R)



(S, S)

Column : Alcyon SFC CSP Cellulose-SB (5 μ m)
 250 X 4.6 mm I.D.
 Eluent : CO₂/methanol containing 0.1 % diethylamine (70/30)
 Flow rate : 3.0 mL/min
 Temperature : 35°C
 Detection : UV at 210 nm
 Backpressure : 13.8 MPa (2000 psi)
 Injection : 2 μ L (0.5 mg/mL)