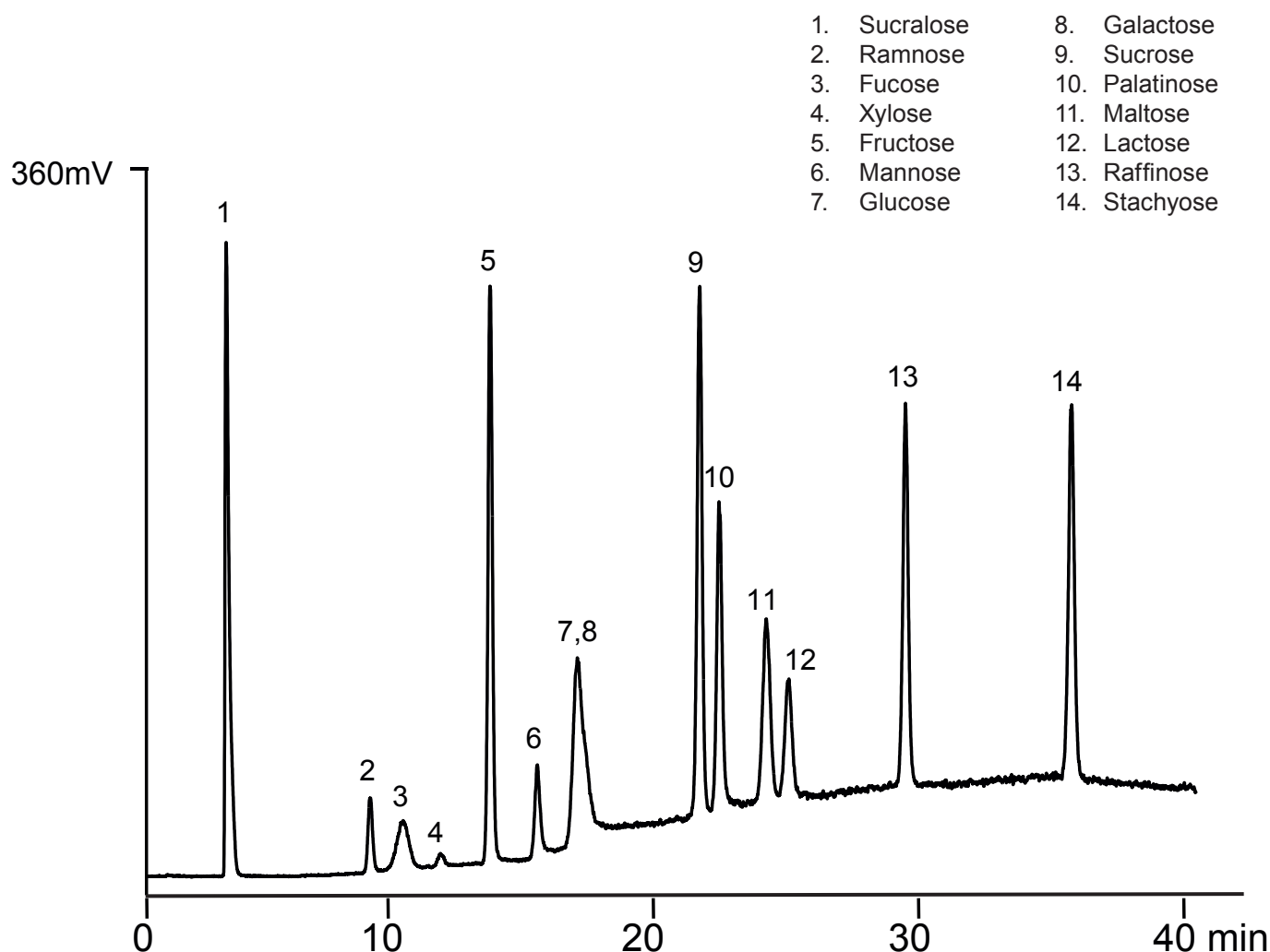


Application Note



Analysis of saccharides with ELSD



Column: YMC-Pack Polyamine II (5 μ m, 12 nm) 250 x 4.6 mm ID
Part no.: PB12S05-2546WT
Eluent: A) water
B) acetonitrile
80-60%B (0-30min,linear),
60% (35-40min)
Flow rate: 1.0 mL/min
Temperature: 25 $^{\circ}$ C
Detection: ELSD
Injection: 5 μ L (2-40 mg/mL)