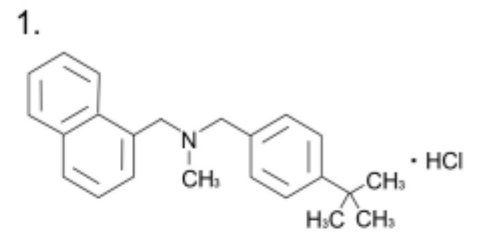
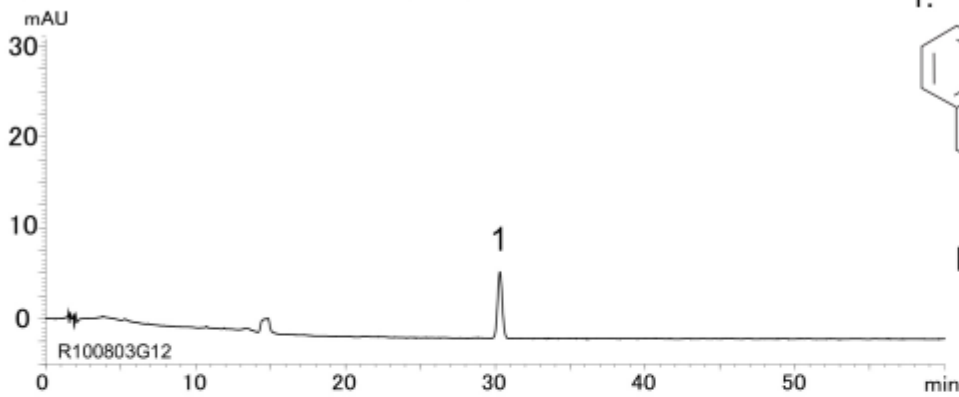
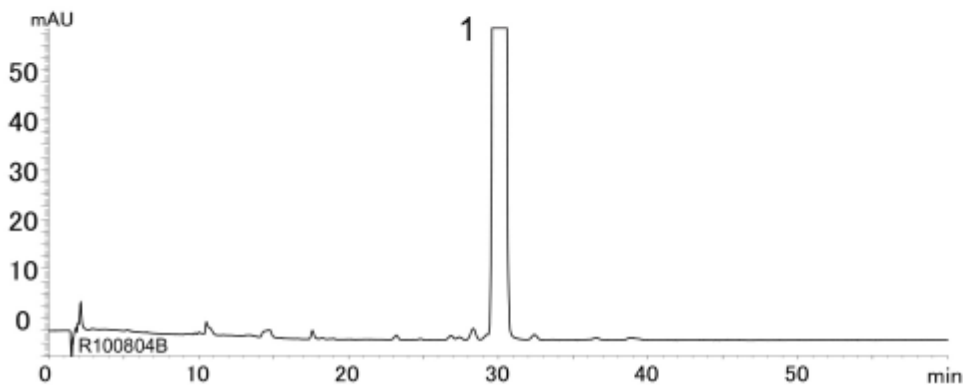


Commercially available reagent
(0.6 $\mu\text{g/mL}$, correspond to purity standard solution)

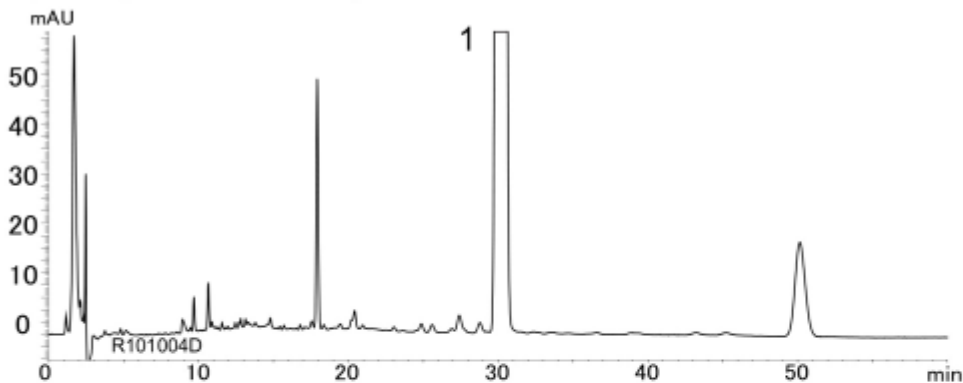


Butenafine hydrochloride

Commercially available reagent
(0.6 mg/mL, correspond to purity sample solution)



Butenafine cream methanol extract
(0.6 mg/mL butenafine)



Column : YMC-Triart C18 (3 μm , 12 nm)
150 X 3.0 mm I.D.
Eluent : A) 0.5 mM $\text{CH}_3\text{COONH}_4$
B) acetonitrile
40-80%B (0-10 min), 80%B (10-60 min)
Flow rate : 0.4 mL/min
Temperature : 40°C
Detection : UV at 217 nm
Injection : 10 μL

(日本薬局方収載原案記載条件)