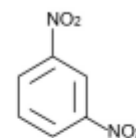
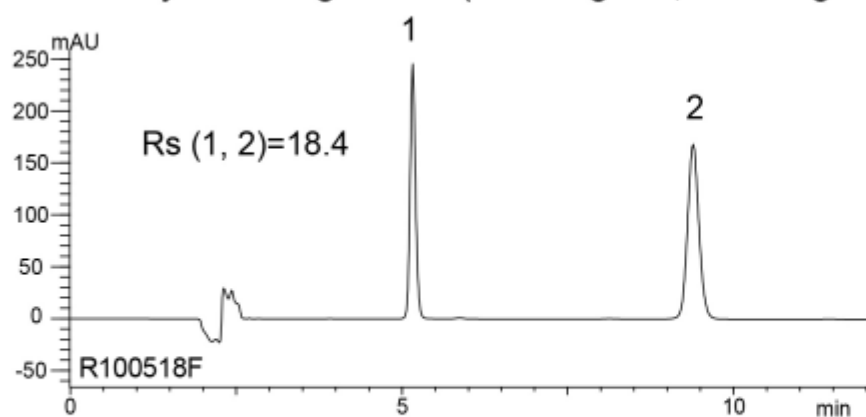
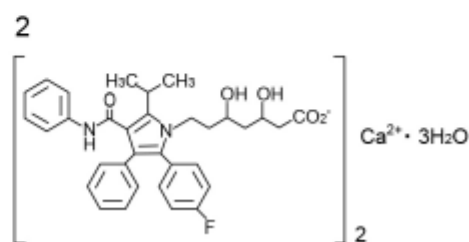
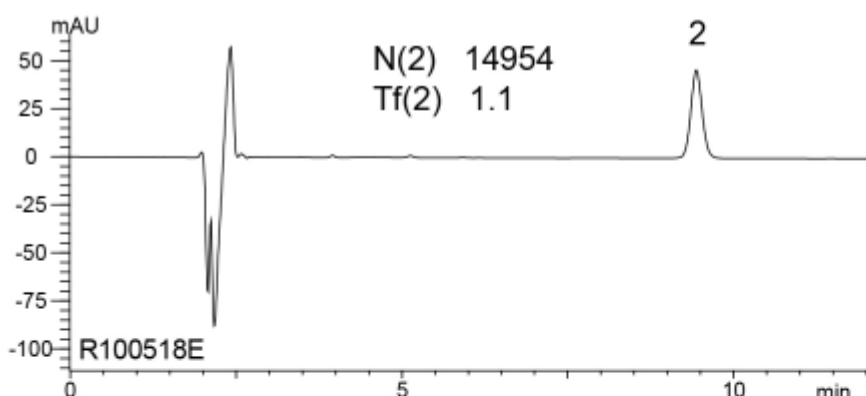


### Uniformity of dosage units (0.04 mg/mL, 0.11 mg/mL, 10 $\mu$ L inj.)



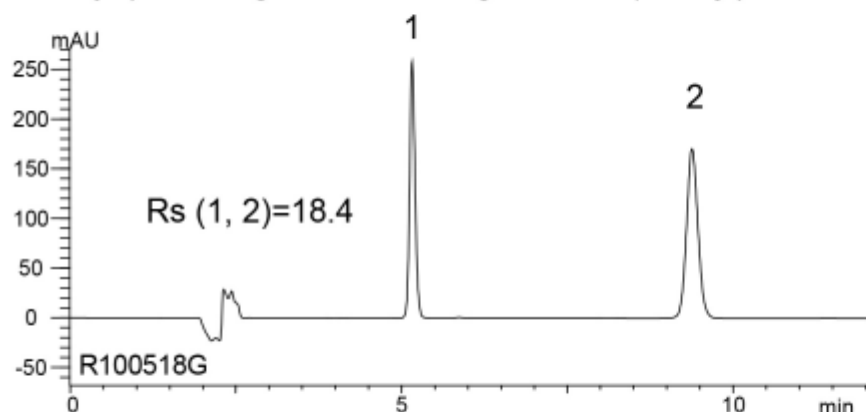
1,3-Dinitrobenzene (I.S.)

### Dissolution (0.006 mg/mL, 50 $\mu$ L inj.)



Atorvastatin calcium hydrate

### Assay (0.04 mg/mL, 0.11 mg/mL, 10 $\mu$ L inj.)



- Column : YMC-Pack ODS-A (5  $\mu$ m, 20 nm)  
250 X 4.6 mm I.D.
- Eluent : citric acid buffer\*/acetonitrile/THF (53/27/20)  
\*Dissolve 10.5 g citric acid monohydrate in 900 mL water  
→ adjust pH 4.0 by 28% ammonia solution → add water to make 1000 mL
- Flow rate : 1.3 mL/min
- Temperature : 30°C
- Detection : UV at 244 nm

(日本薬局方収載原案記載条件)