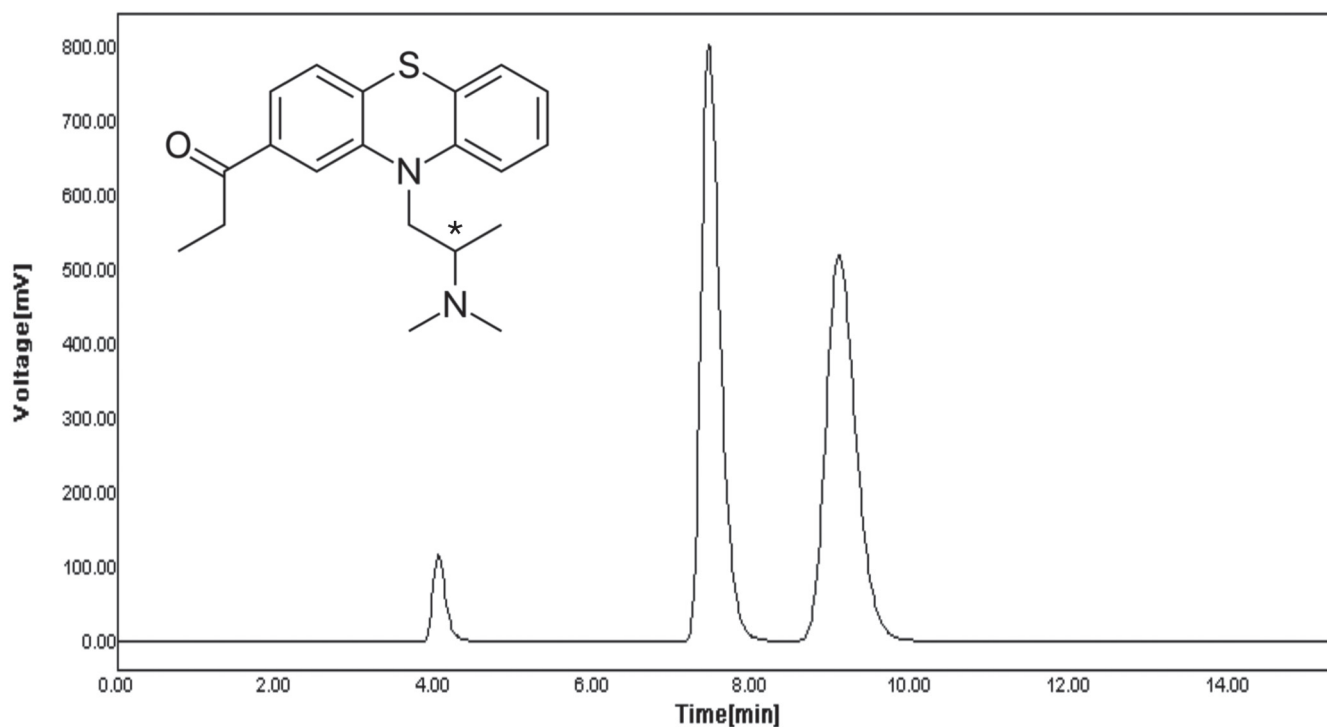


Application Note



Propiomazine**



Column: CHIRAL ART Amylose-C 5 μ m (250 x 4.6 mm ID)
Part No.: KAN99S05-2546WT
Eluent: methanol/diethylamine (100/0.1)
Flow rate: 0.7 mL/min
Temperature: 25°C
Detection: UV at 254 nm
Injection: 20 μ L (0.5 mg/mL)

**Application data by courtesy YMC India Pvt. Ltd.