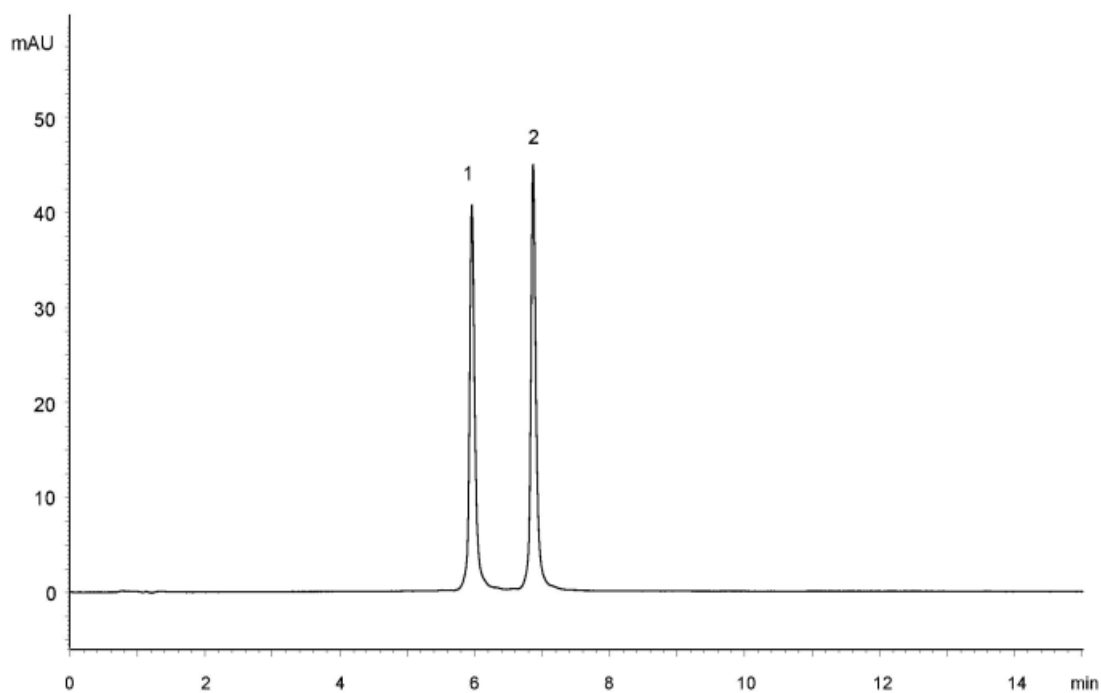


1. 5'-TCATCACACTGAATACCAAT-3' (20 mer)
2. 5'-GTCATCACACTGAATACCAAT-3' (21 mer)



Column : YMC-BioPro QA-F (5  $\mu$ m)  
100 X 4.6 mm I.D.

Eluent : A) 10 mM NaOH  
B) 10 mM NaOH containing 1.0 M NaClO<sub>4</sub>  
25-55%B (0-15 min), 100%B (15-20 min)

Flow rate : 1.0 mL/min

Temperature : 25°C

Detection : UV at 260 nm

Injection : 4  $\mu$ L (5 nmol/mL)