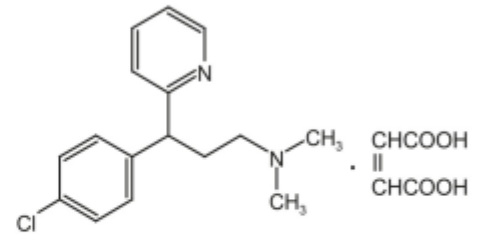
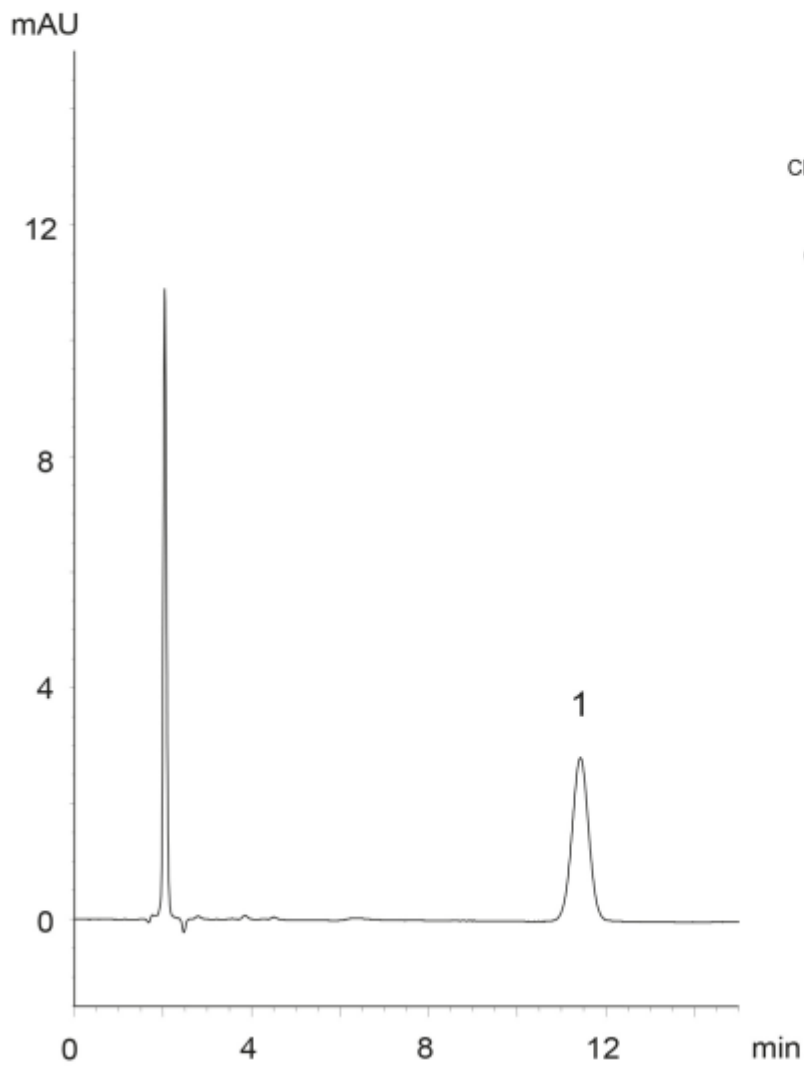


1.



Chlorpheniramine maleate



Column	: YMC-Pack ODS-A (10 μ m, 12 nm) 300 x 4.0 mm I.D.
Eluent	: phosphate buffer (pH 2.8) [※] / acetonitrile (80/20) [※] Dissolve 8.57 g of NH ₄ H ₂ PO ₄ and 1 mL of H ₃ PO ₄ in 1000 mL water
Flow rate	: 1.3 mL/min (adjust the flow rate so that the retention time of chlorpheniramine maleate is about 11 min)
Temperature	: 25 °C
Detection	: UV at 225 nm
Injection	: 20 μ L (0.003 mg/mL)