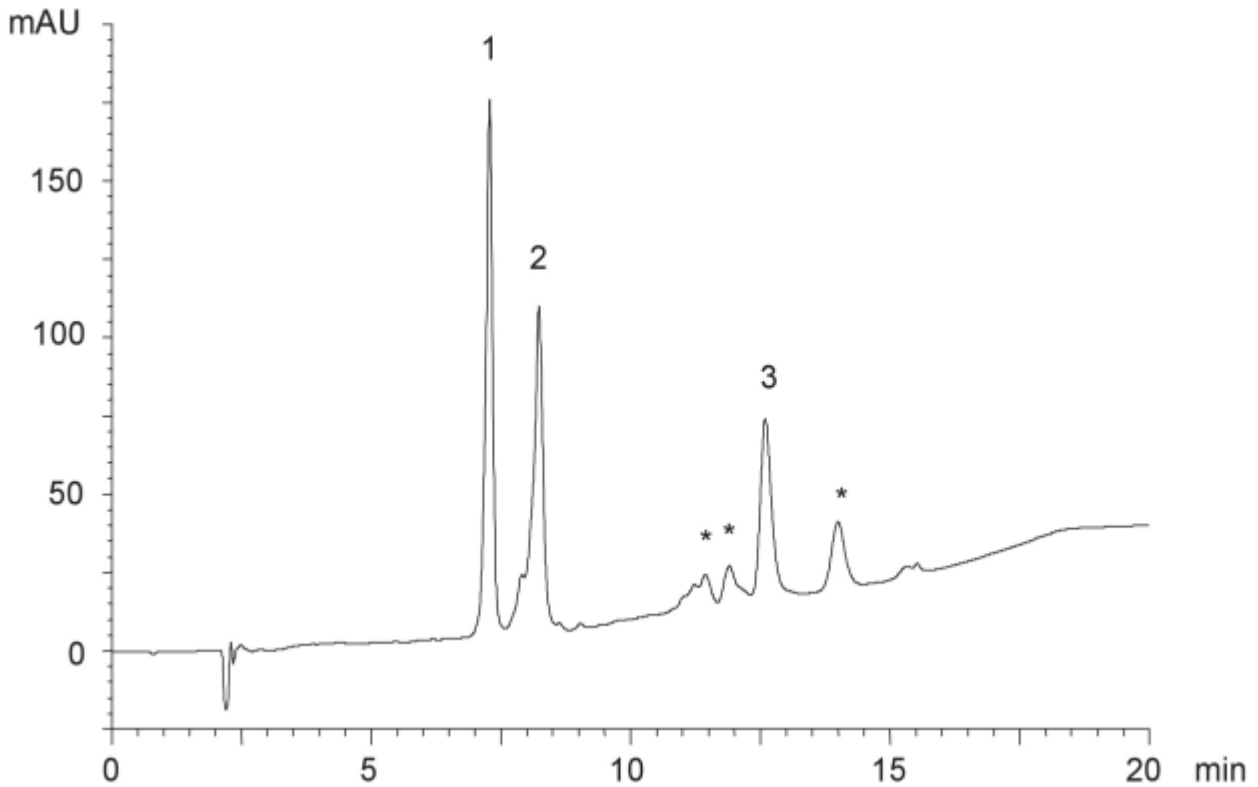


- |                                   |             |
|-----------------------------------|-------------|
| 1. BSA                            | (MW 66,000) |
| 2. Conalbumin (Chicken egg white) | (MW 77,000) |
| 3. Lipoxidase (Soybean)           | (MW 96,000) |

\* Impurities in commercial lipoxidase



Column : YMC-Pack C4 (5  $\mu$  m, 30nm)  
 150  $\times$  4.6 mm I.D.  
 Eluent : A)water/TFA (100/0.1)  
 B)acetonitrile/2-propanol/TFA (50/50/0.1)  
 30-75%B (0-15min),75%B (15-20min)  
 Flow rate : 1.0 mL/min  
 Temperature : 37  $^{\circ}$ C  
 Detection : UV at 220 nm  
 Injection : 10  $\mu$ L (0.25~1.0 mg/mL)