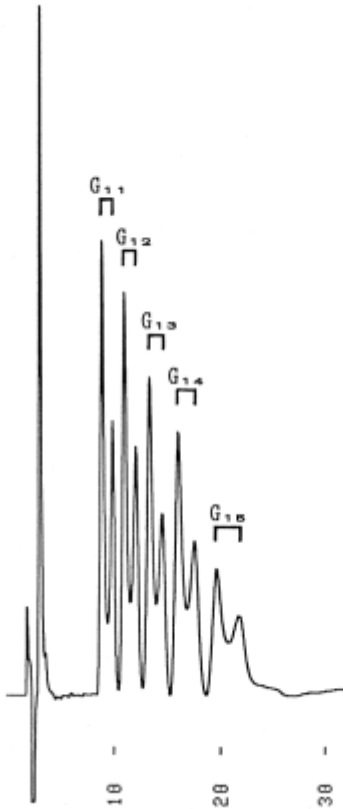


- 1.Maltoundecaose (G₁₁)
- 2.Maltododecaose (G₁₂)
- 3.Maltotridecaose (G₁₃)
- 4.Maltotetradecaose (G₁₄)
- 5.Maltopentadecaose (G₁₅)



Column : YMC-Pack ODS-A (5 μ m, 12nm)
150 \times 4.6 mm I.D.
Eluent : methanol/water (5/995)
Flow rate : 1.0 mL/min
Temperature : 37 $^{\circ}$ C
Detection : RI, 8×10^{-6} RIU/FS
Injection : 25 μ L (1 mg/mL)
Sample : Manufactured by Nakano Vinegar Co., Ltd.,
Nakano Central Research Institute