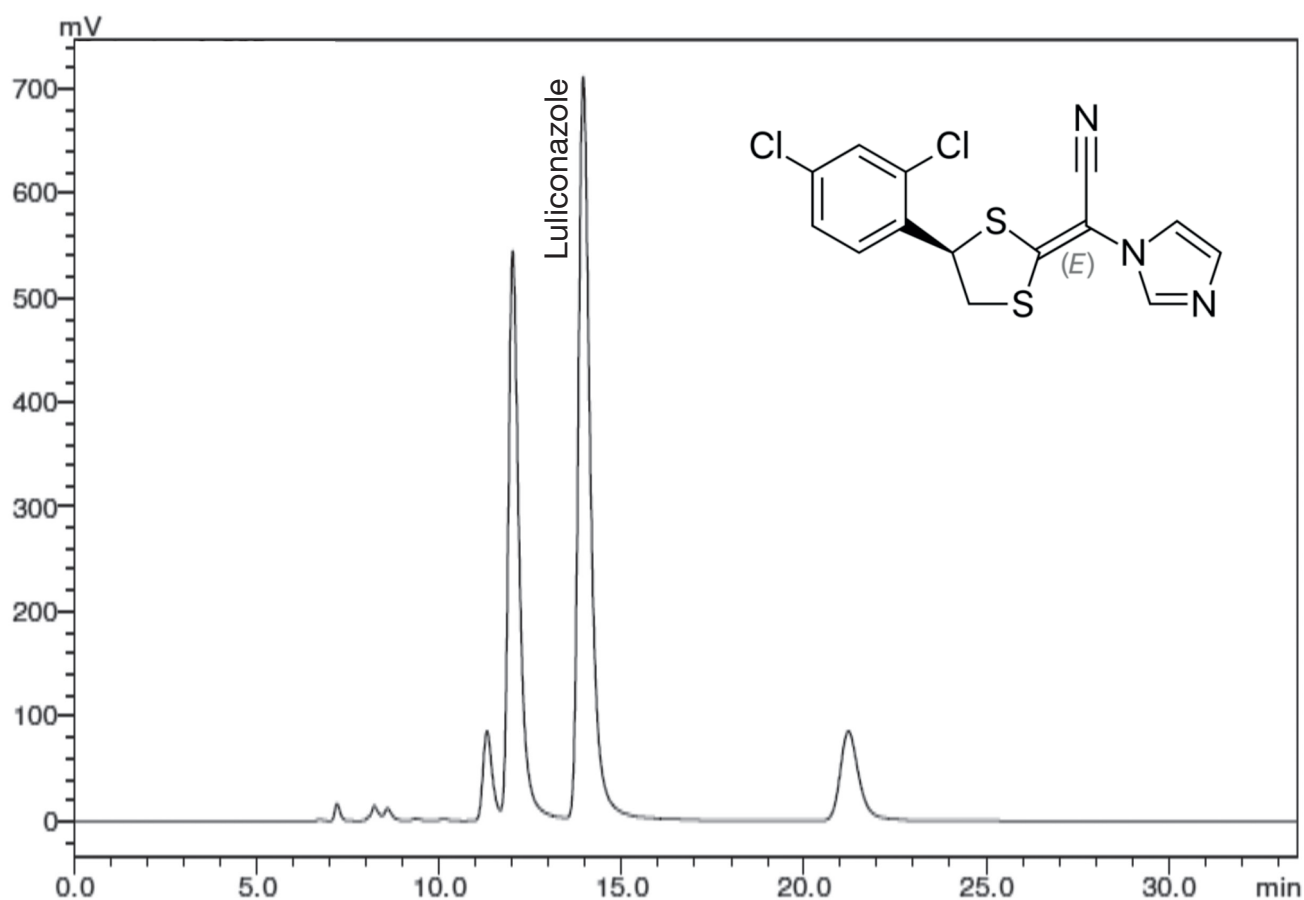


# Application Note

**YMC**  
EUROPE GMBH

Luliconazole\*\*



Column: CHIRAL ART Amylose-SA 5  $\mu$ m (250 x 4.6 mm ID)  
Part No.: KSA99S05-2546WT  
Eluent: methyl *tert*-butyl ether/2-propanol/diethylamine (80/20/0.1)  
Flow rate: 0.5 mL/min  
Temperature: 25°C  
Detection: UV at 295 nm  
Injection: 20  $\mu$ L (0.1 mg/mL)

\*\*Application data by courtesy YMC India Pvt. Ltd.