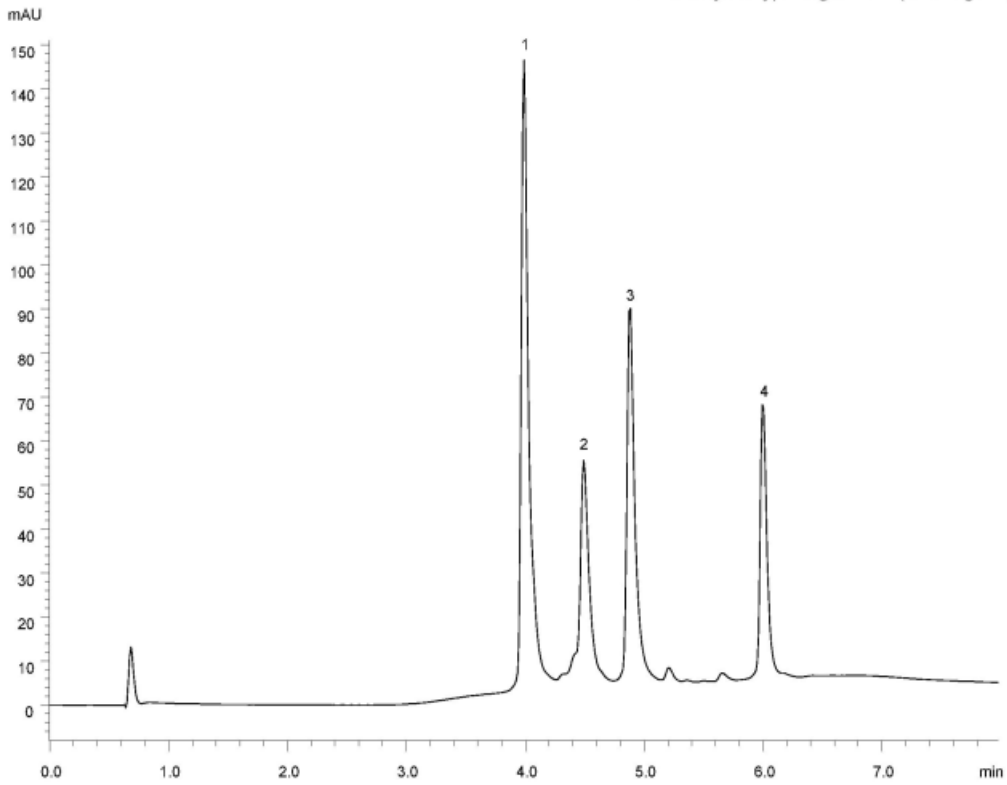


1. Myoglobin (0.73 mg/mL)
2. Ribonuclease A (0.75 mg/mL)
3. Lysozyme (0.25 mg/mL)
4.  $\alpha$ -Chymotrypsinogen A (0.25 mg/mL)



Column : BioPro HIC BF (4  $\mu$ m)  
100 X 4.6 mm I.D.

Eluent : A) 100 mM NaH<sub>2</sub>PO<sub>4</sub>-Na<sub>2</sub>HPO<sub>4</sub> (pH 7.0)  
containing 2.0 M (NH<sub>4</sub>)<sub>2</sub>SO<sub>4</sub>  
B) 100 mM NaH<sub>2</sub>PO<sub>4</sub>-Na<sub>2</sub>HPO<sub>4</sub> (pH 7.0)  
0-100%B (0-4.58 min), 100%B (4.58-6.58 min)

Flow rate : 1.2 mL/min

Temperature : 25°C

Detection : UV at 280 nm

Injection : 15  $\mu$ L