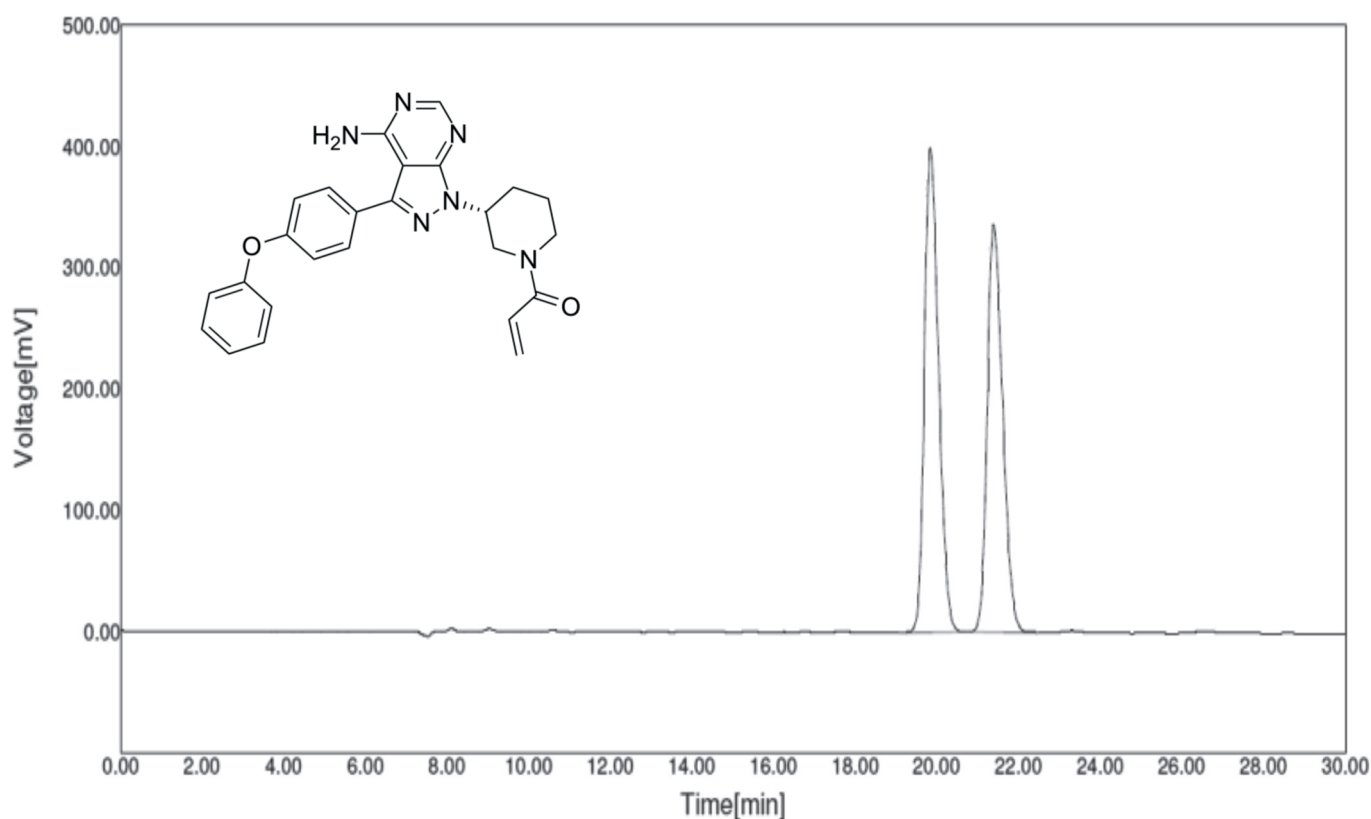


# Application Note



Ibrutinib\*\*



Column: CHIRAL ART Cellulose-C 5  $\mu$ m (250 x 4.6 mm ID)  
Part No.: KCN99S05-2546WT  
Eluent: *n*-hexane/2-propanol (98/2)  
Flow rate: 0.5 mL/min  
Temperature: 15°C  
Detection: UV at 210 nm  
Injection: 20  $\mu$ L (0.5 mg/mL)