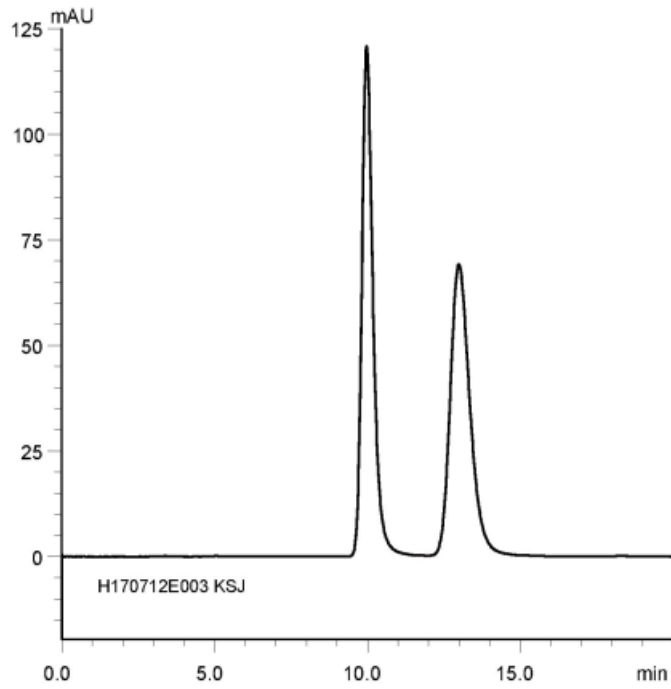


α	1.43
Rs	3.36



Column : CHIRAL ART Cellulose-SJ (5 μ m)
 250 X 4.6 mm I.D.
 Eluent : *n*-hexane/ethanol/diethylamine (95/5/0.1)
 Flow rate : 1.0 mL/min
 Temperature : 25°C
 Detection : UV at 265 nm
 Injection : 5 μ L (1 mg/mL)