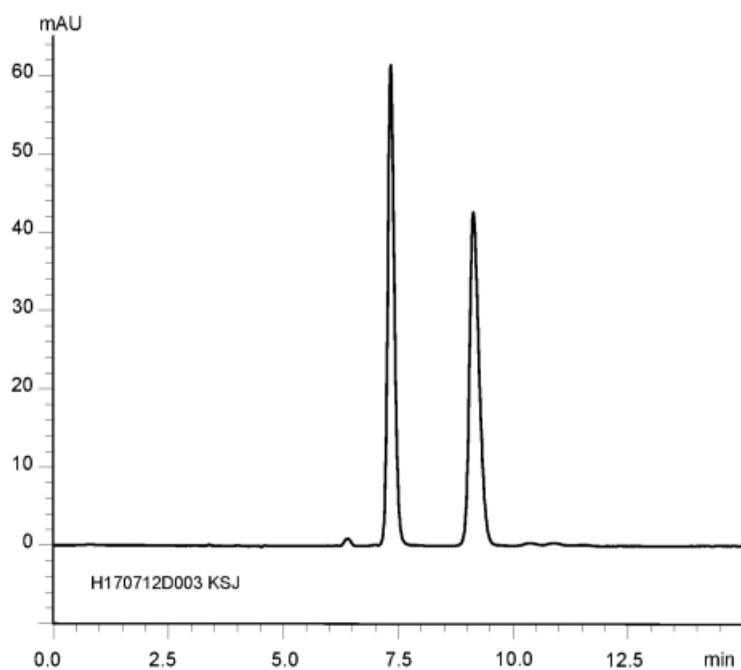


α	1.41
Rs	5.59



Column : CHIRAL ART Cellulose-SJ (5 μ m)
250 X 4.6 mm I.D.
Eluent : *n*-hexane/ethanol/diethylamine (95/5/0.1)
Flow rate : 1.0 mL/min
Temperature : 25°C
Detection : UV at 270 nm
Injection : 5 μ L (1 mg/mL)