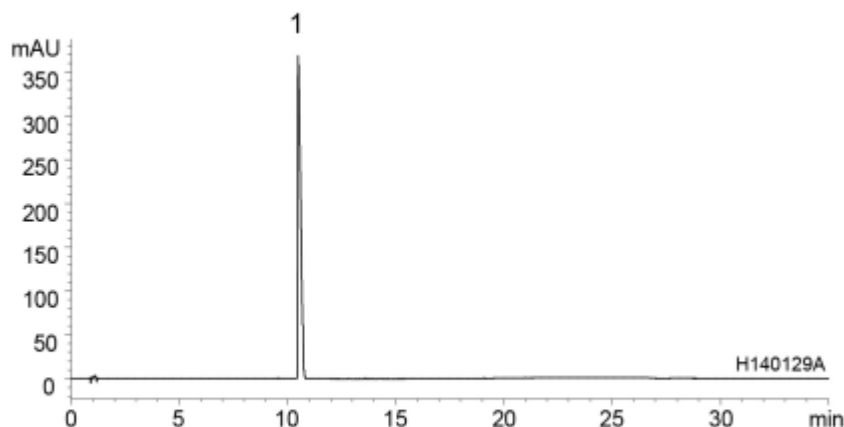
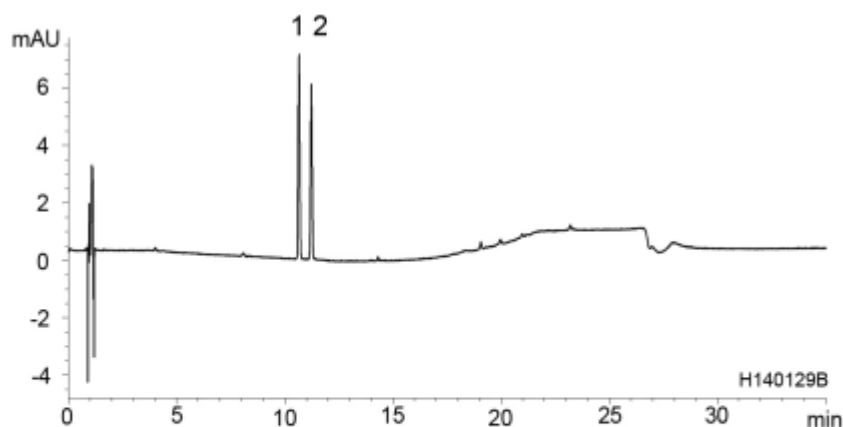


(A) Standard solution^{*1}, Sample solution^{*1}
(0.1 mg/mL Aripiprazole)



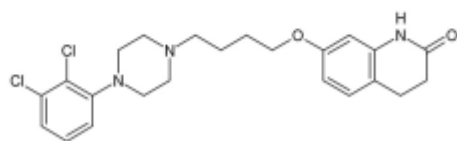
| | System suitability requirement | Result |
|---|--------------------------------|--------|
| Relative standard deviation of the peak area (Aripiprazole) | ≤ 1.0% | 0.13% |

(B) System suitability solution^{*1}
(1.0 µg/mL Aripiprazole, 1.0 µg/mL Aripiprazole related compound F)



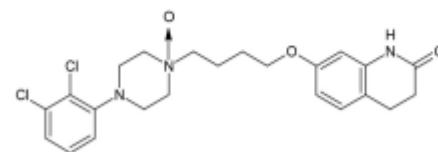
| | System suitability requirement | Result |
|-------------------------------|--------------------------------|--------|
| Tailing factor (Aripiprazole) | ≤ 1.5 | 1.03 |
| Resolution (1,2) | ≥ 2.0 | 4.49 |

1



Aripiprazole

2



Aripiprazole related compound F

| | |
|-------------|---|
| Column | : YMC-Pack ODS-A (3 µm, 12 nm) 100 X 4.6 mm I.D. |
| Eluent | : A) acetonitrile/0.05 % TFA (10/90) B) acetonitrile/0.05 % TFA (90/10) 20%B (0-2 min), 20-35%B (2-10 min), 35-90%B (10-20 min), 90%B (20-25 min), 90-20%B (25-26 min), 20%B (26-35 min) |
| Flow rate | : 1.2 mL/min |
| Temperature | : 25°C |
| Detection | : UV at 254 nm |
| Injection | : 20 µL |

(The United States Pharmacopeia 36th; Assay, Impurities)

^{*1} All solutions were prepared from aripiprazole and aripiprazole related compound F supplied as a reagent for laboratory use.