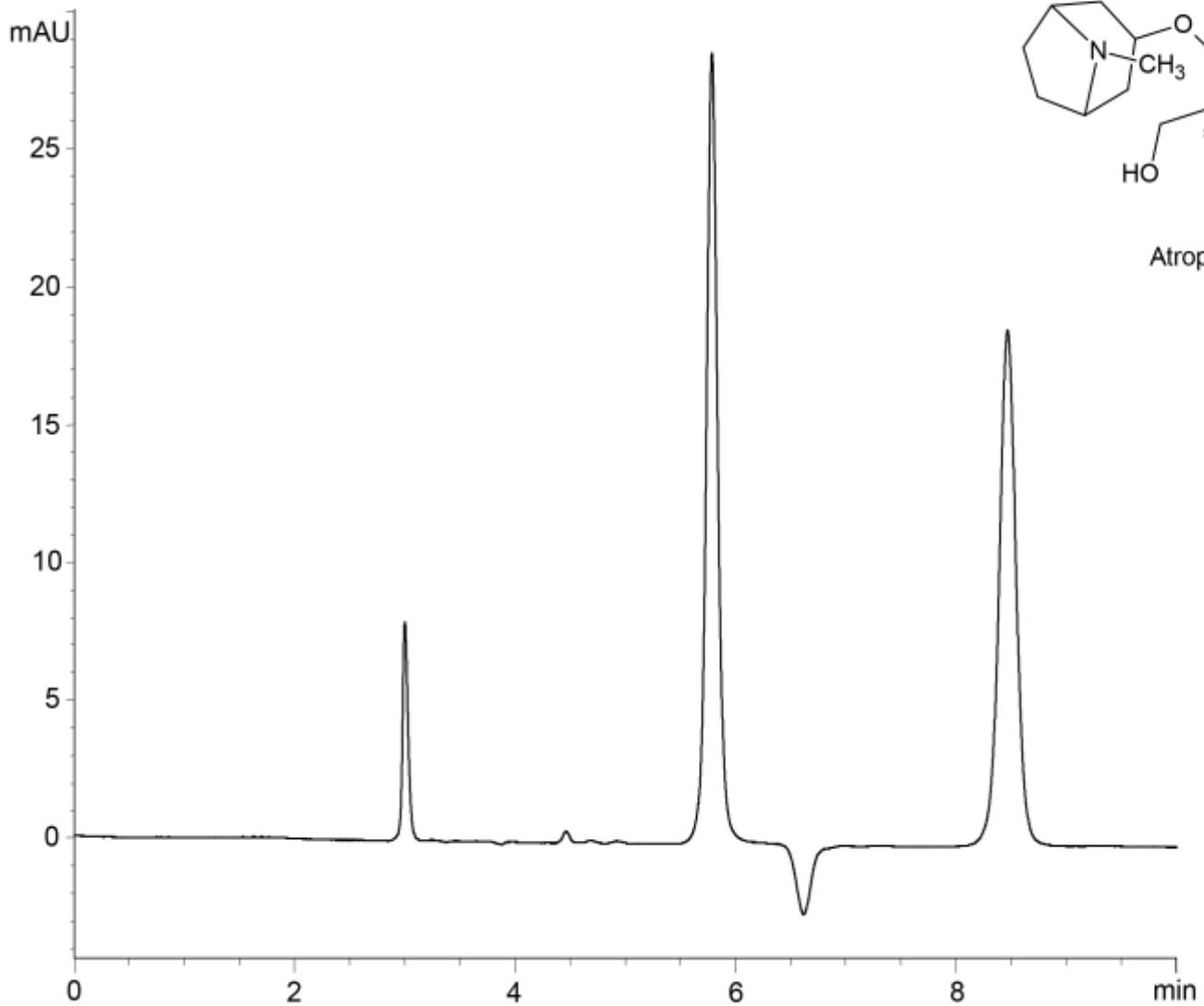


α	1.93
R_s	12.0



Column : YMC CHIRAL Cellulose-C (5 μ m)
 250 X 4.6 mm I.D.
 Eluent : *n*-hexane/ethanol/ethanolamine (90/10/0.1)
 Flow rate : 1.0 mL/min
 Temperature : 25°C
 Detection : UV at 230 nm
 Injection : 2 μ L (1 mg/mL)