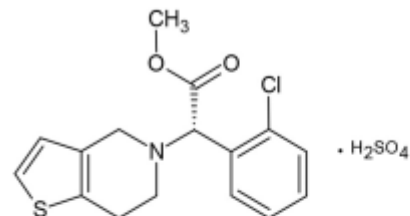


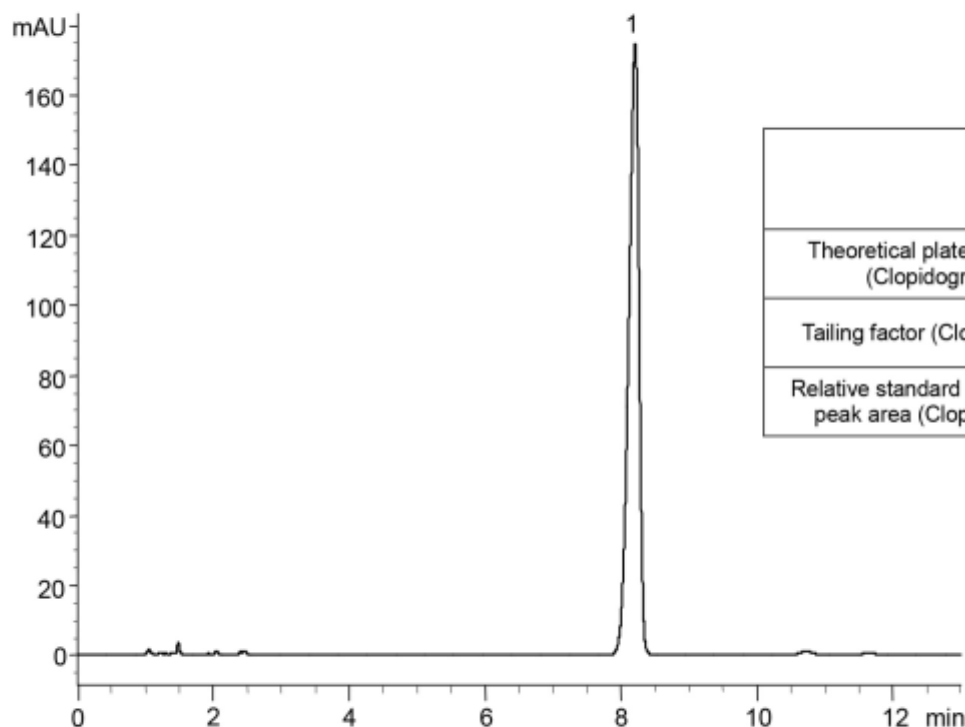
Standard solution*¹

(0.126 mg/mL Clopidogrel sulfate)

1



Clopidogrel sulfate



	System suitability requirement	Result
Theoretical plate number (Clopidogrel)	≥ 4500	13900
Tailing factor (Clopidogrel)	≤ 2.0	0.80
Relative standard deviation of peak area (Clopidogrel)	$\leq 1.0\%$	0.12%

Column : YMC-Pack Pro C18 (5 μm , 12 nm)
150 X 4.0 mm I.D.

Eluent : A) buffer*²/methanol (19/1)
B) acetonitrile/methanol (19/1)
A/B (3/2)
^{*2} Dissolve 0.87 g of sodium 1-pentanesulfonate in 1000 mL water, adjust to pH 2.5 with H_3PO_4

Flow rate : 1.1 mL/min (adjust the flow rate so that the retention time of Clopidogrel is about 8 min)

Temperature : 30°C

Detection : UV at 220 nm

Injection : 10 μL

(The draft for the Japanese Pharmacopoeia; Assay)

*¹ Standard solution was prepared from Clopidogrel sulfate supplied as a reagent for laboratory use.