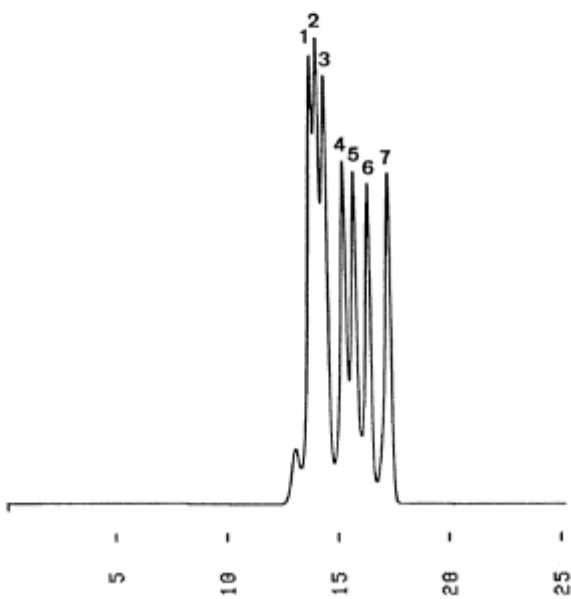


- 1.Maltopentadecaose (G₁₅)
- 2.Maltotridecaose (G₁₃)
- 3.Maltoundecaose (G₁₁)
- 4.Maltoheptaose (G₇)
- 5.Maltopentaose (G₅)
- 6.Maltotriose (G₃)
- 7.Glucose (G₁)



Column : YMC-Pack Diol-60
500 × 8.0 mm I.D.
Eluent : water
Flow rate : 1.0 mL/min
Temperature : ambient (24 °C)
Detection : RI, 64 × 10⁻⁶ RIU/FS
Injection : 60 μL (0.60~0.75 mg/mL)