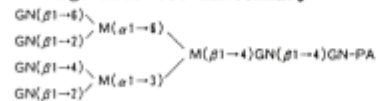


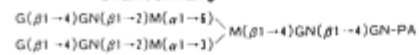
### 1.PA-Sugar Chain 014

N-Acetylglucosamine type,  
agalacto tetraantennary



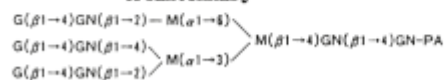
### 2.PA-Sugar Chain 001

N-Acetylglucosamine type,  
biantennary

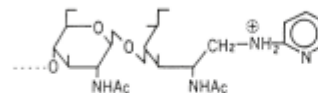


### 3.PA-Sugar Chain 002

N-Acetylglucosamine type,  
triantennary



G : galactose  
GN : N-acetylglucosamine  
M : mannose  
F : fucose  
PA : pyridylamino (group)



Column	: YMC-Pack ODS-A (5 μm, 30nm) 150 × 4.6 mm I.D.
Eluent	: methanol/20mM NH <sub>4</sub> H <sub>2</sub> PO <sub>4</sub> (5/95)
Flow rate	: 1.0 mL/min
Temperature	: 37 °C
Detection	: FLS at Ex.320 nm, Em. 400 nm, 16 mV/FS
Injection	: 2 μL (3.3 pmol/mL)
Sample	: PA-Sugar Chain Series manufactured by TAKARA SHUZO CO., LTD.