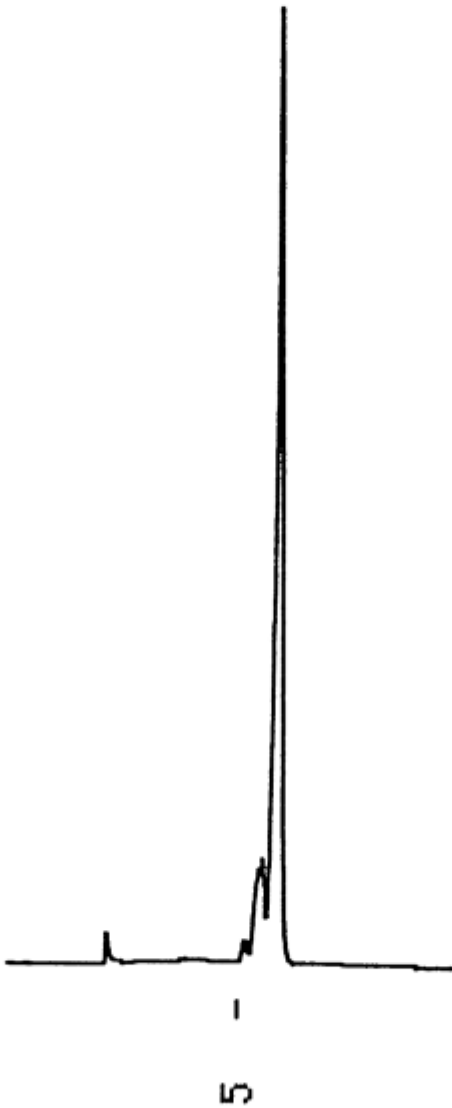


1. Retinol palmitate
(Vitamin A palmitate)



Column : YMC-Pack SIL (5 μ m, 12nm)
150 \times 4.6 mm I.D.
Eluent : cyclohexane/dichloromethane/acetic acid (100/0.5/0.5)
Flow rate : 1.0 mL/min
Temperature : 30 $^{\circ}$ C
Detection : UV at 350 nm, 0.32 AUFS
Injection : 5 μ L (1.0 mg/mL)