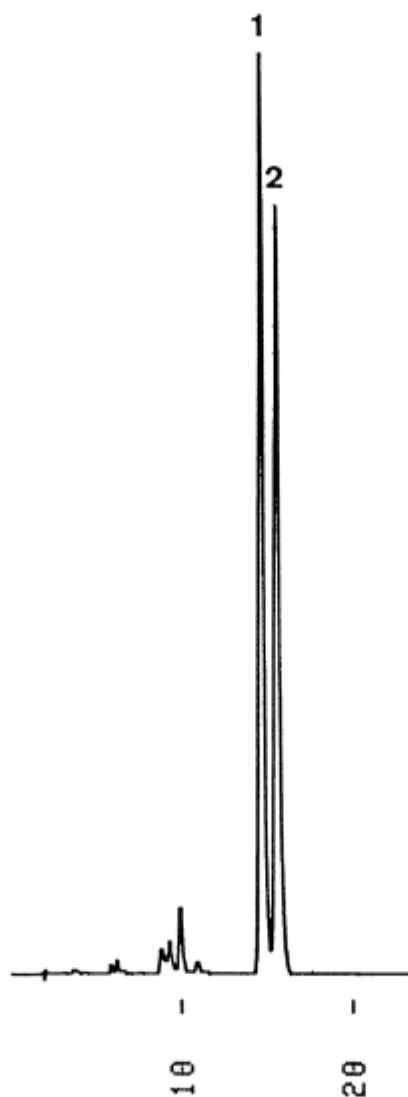


1.  $\alpha$ -Carotene
2.  $\beta$ -Carotene



Column : YMC-Pack ODS-A (5  $\mu$ m, 12nm)  
150  $\times$  4.6 mm I.D.  
Eluent : acetonitrile/methanol/THF (50/45/5)  
Flow rate : 1.0 mL/min  
Temperature : 30  $^{\circ}$ C  
Detection : VIS at 450 nm, 0.16 AUFS  
Injection : 5  $\mu$ L (0.05 mg/mL)