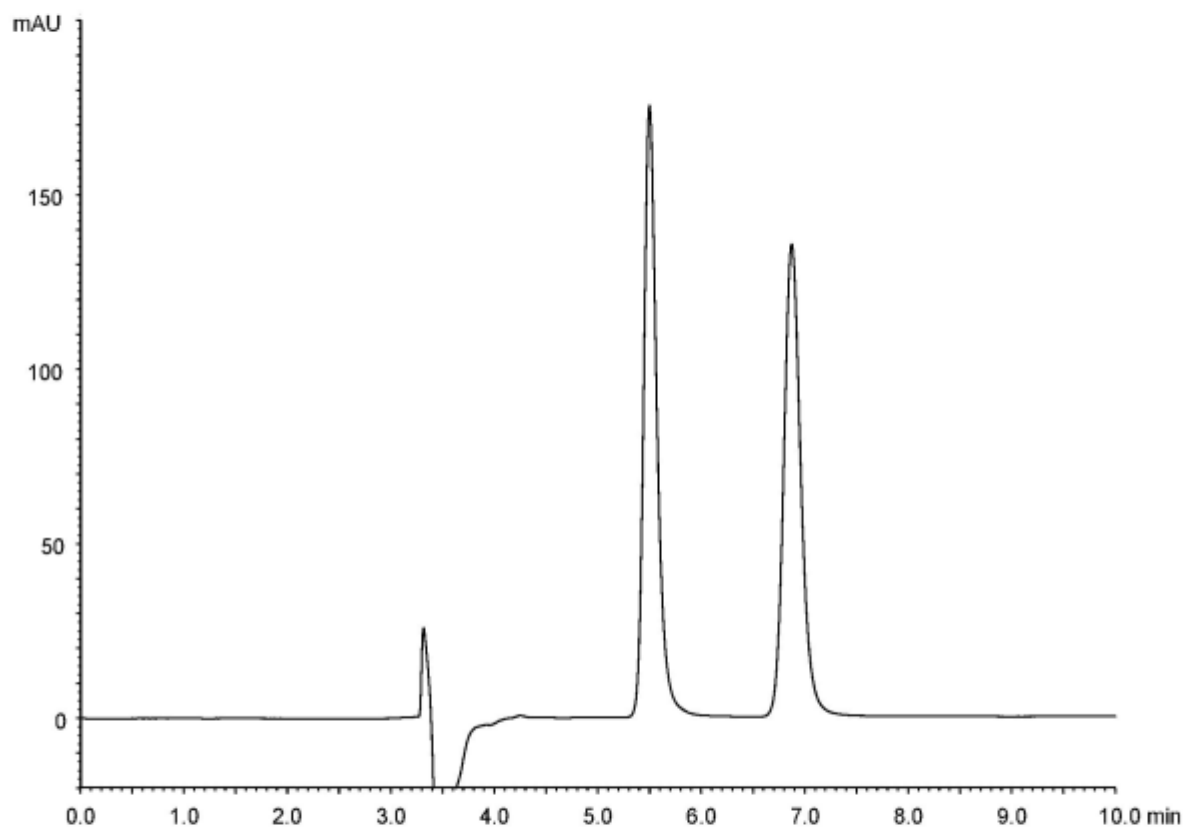


α	1.5
Rs	5.4



Column : CHIRAL ART Amylose-SA (5 μ m)
 250 X 4.6 mm I.D.
 Eluent : ethyl acetate/ethanol/diethylamine (95/5/0.1)
 Flow rate : 1.0 mL/min
 Temperature : 25°C
 Detection : UV at 290 nm
 Injection : 10 μ L (100 μ g/mL)