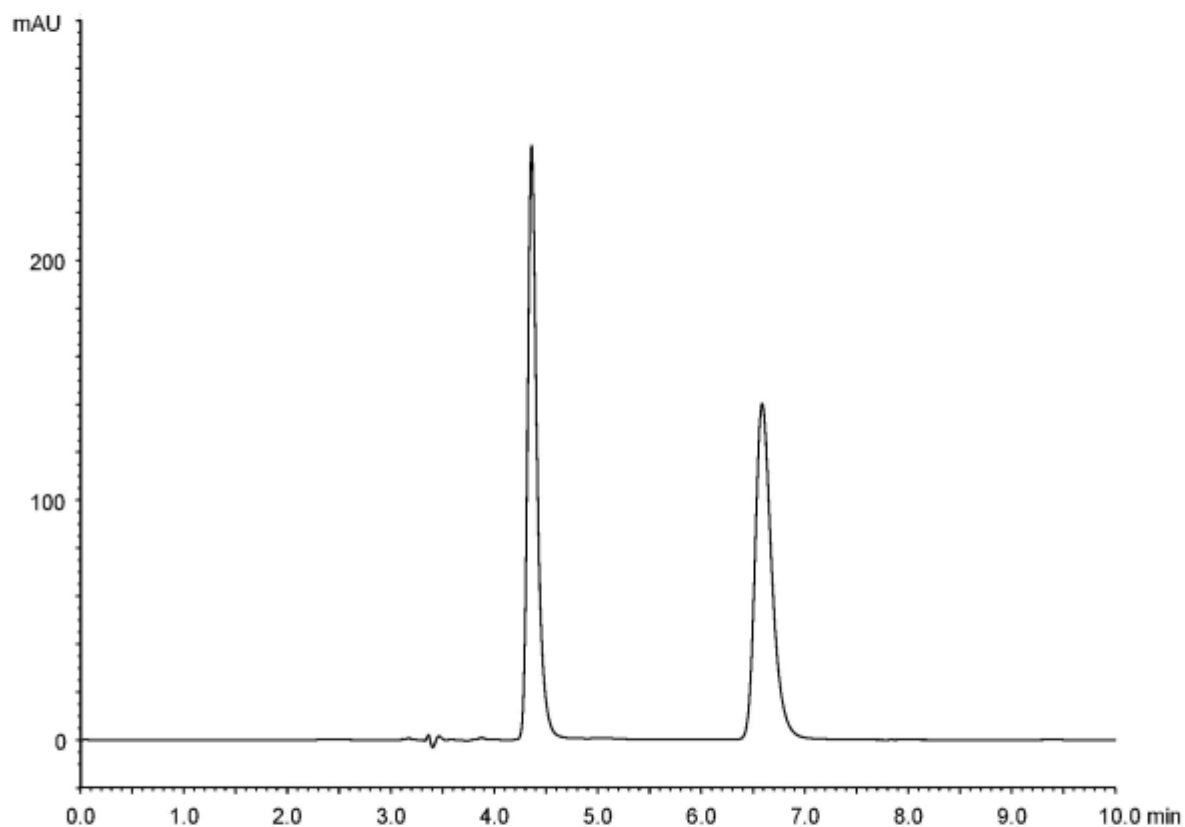


α	2.5
Rs	10.1



Column : CHIRAL ART Cellulose-SB (5 μ m)
 250 X 4.6 mm I.D.
 Eluent : *n*-hexane/ethanol/diethylamine (40/60/0.1)
 Flow rate : 1.0 mL/min
 Temperature : 25°C
 Detection : UV at 265 nm
 Injection : 10 μ L (100 μ g/mL)