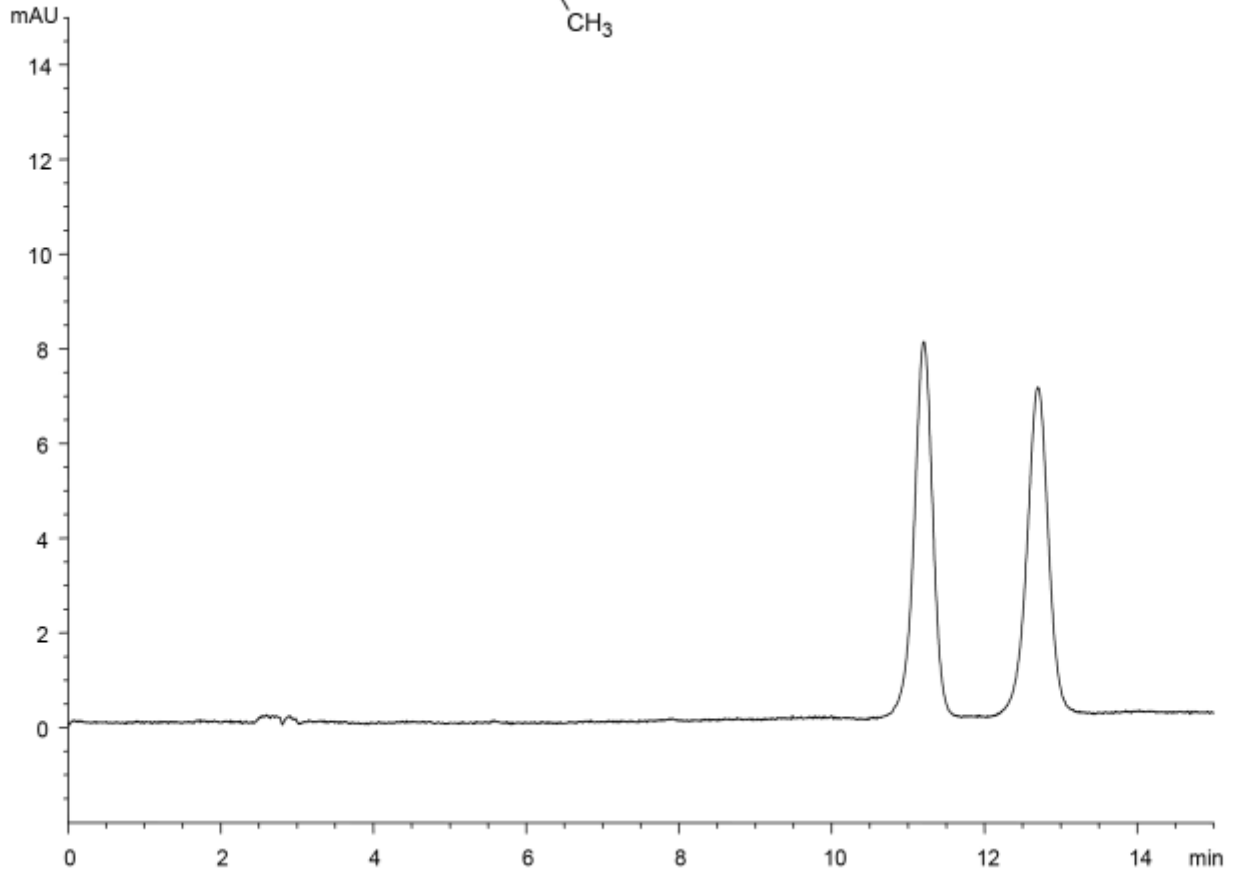


α	1.2
Rs	3.2



Column : YMC CHIRAL Cellulose-SB (5 μ m)
 250 X 4.6 mm I.D.
 Eluent : 20 mM NH_4HCO_3 -diethylamine (pH 9.0)/acetonitrile (40/60)
 Flow rate : 1.0 mL/min
 Temperature : 25°C
 Detection : UV at 254 nm
 Injection : 2 μ L (200 μ g/mL)