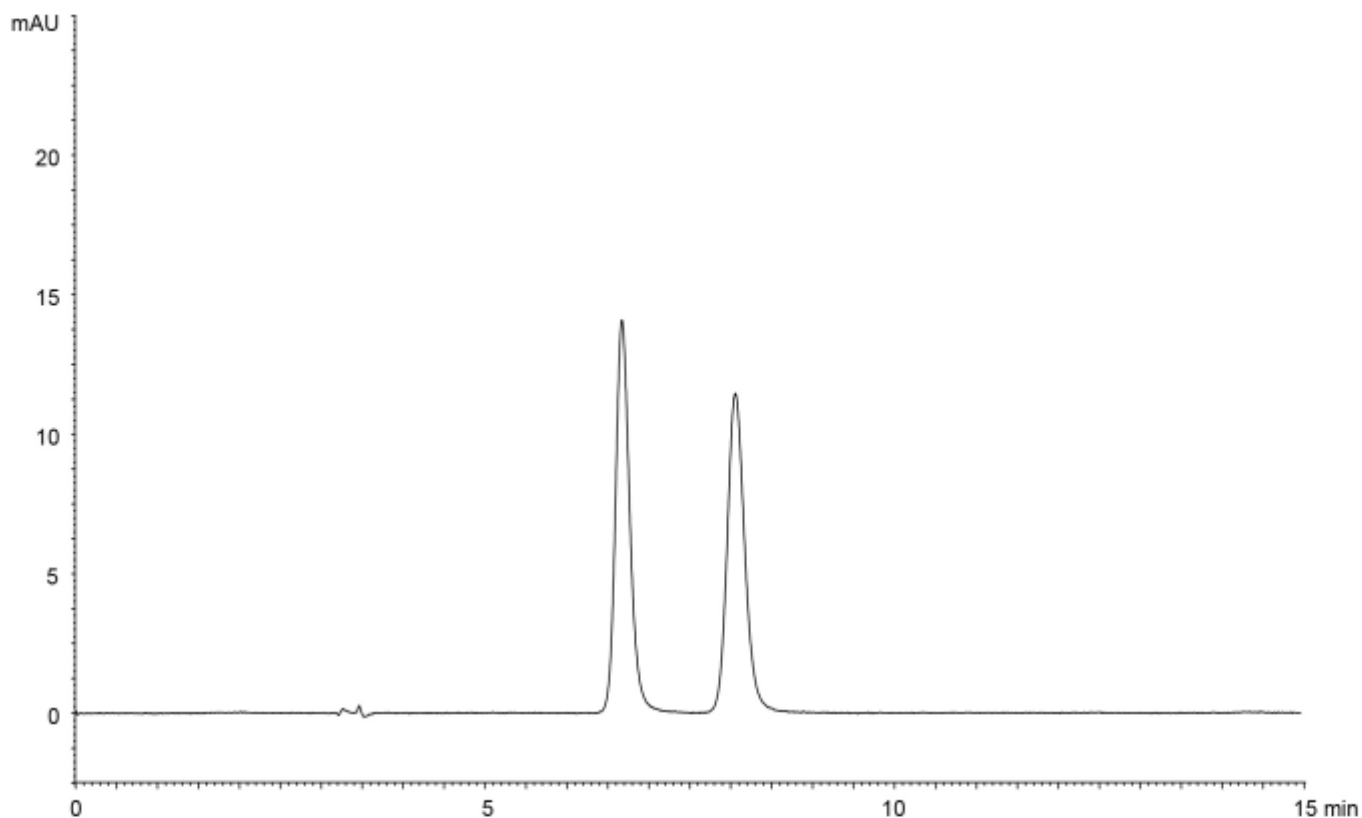


α	1.4
Rs	4.1



Column : YMC CHIRAL Amylose-SA (5 μ m)
 250 X 4.6 mm I.D.
 Eluent : methyl *tert*-butyl ether/ethanol/diethylamine (95/5/0.1)
 Flow rate : 1.0 mL/min
 Temperature : 25°C
 Detection : UV at 344 nm
 Injection : 5 μ L (100 μ g/mL)