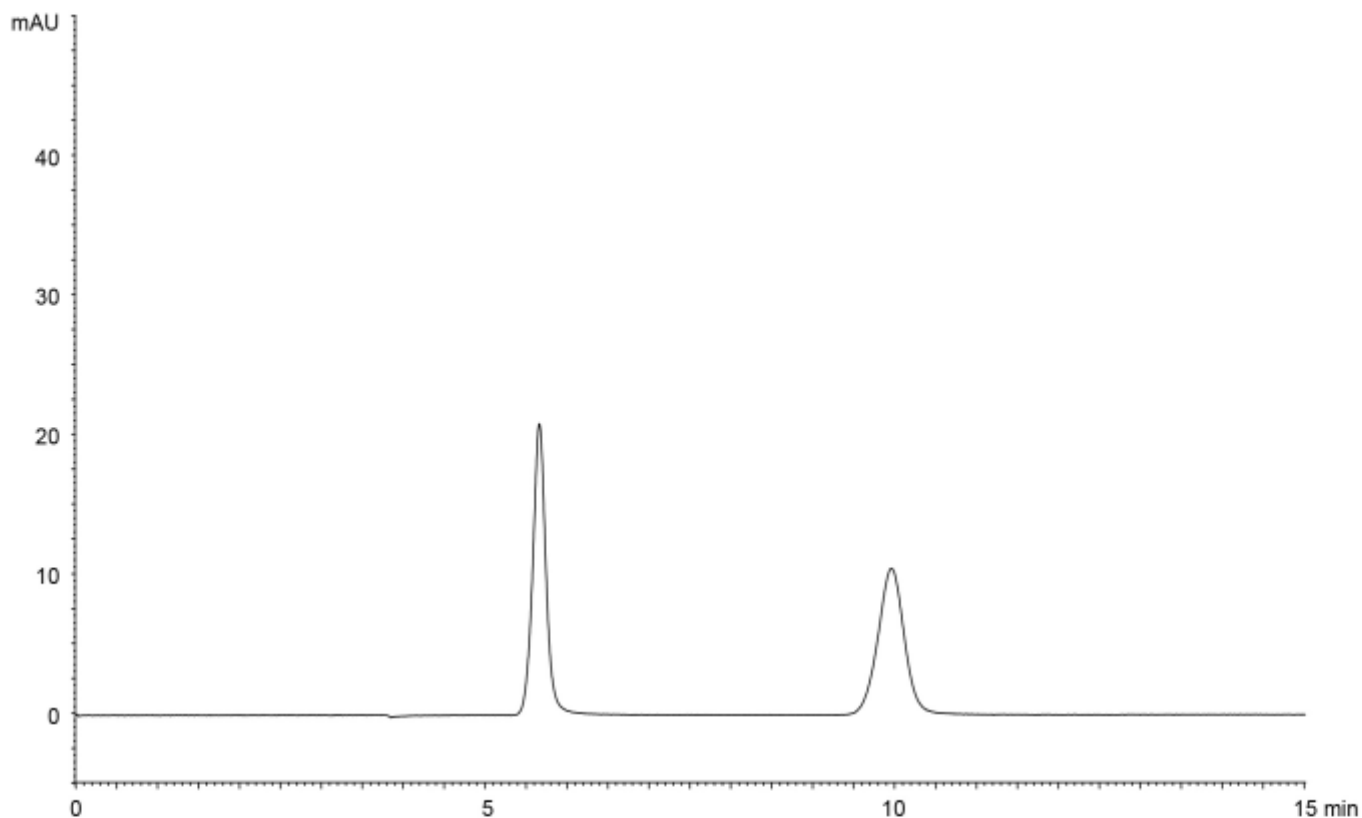


$\alpha$	2.7
Rs	10.2



Column : YMC CHIRAL Amylose-SA (5  $\mu$ m)  
 250 X 4.6 mm I.D.  
 Eluent : methyl *tert*-butyl ether/ethanol/diethylamine (90/10/0.1)  
 Flow rate : 1.0 mL/min  
 Temperature : 25°C  
 Detection : UV at 344 nm  
 Injection : 5  $\mu$ L (100  $\mu$ g/mL)