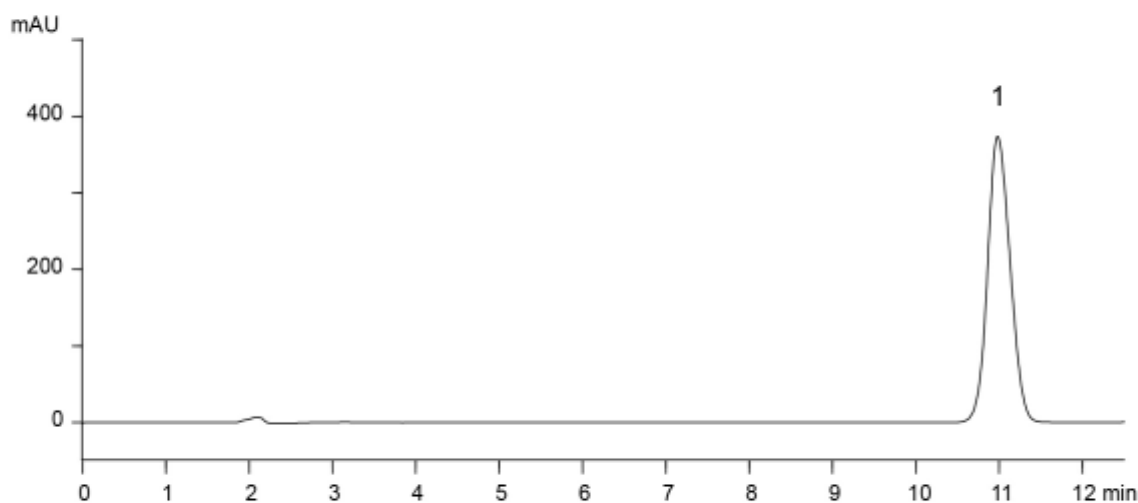
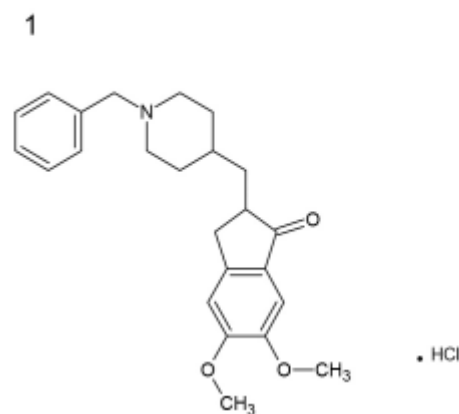


Standard solution*

(0.2 mg/mL Donepezil hydrochloride)

	System suitability requirement	Result
Theoretical plate number (Donepezil)	≥ 4000	7600
Tailing factor (Donepezil)	≤ 1.5	1.13
Relative standard deviation of the peak area (n=6) (Donepezil)	$\leq 1.0\%$	0.10%



Column : YMC-Pack ODS-A (5 μ m, 30 nm)
150 X 4.6 mm I.D.

Eluent : acetonitrile/water/perchloric acid (350/650/1)
containing 2.5 g of sodium 1-decylsulfonate

Flow rate : 0.9 mL/min
(adjust the flow rate so that the retention time of donepezil is about 11 min)

Temperature : 35°C

Detection : UV at 271 nm

Injection : 20 μ L

(The Japanese Pharmacopoeia 16th; Uniformity of dosage units)

* Standard solution was prepared from Donepezil hydrochloride supplied as a reagent for laboratory use.