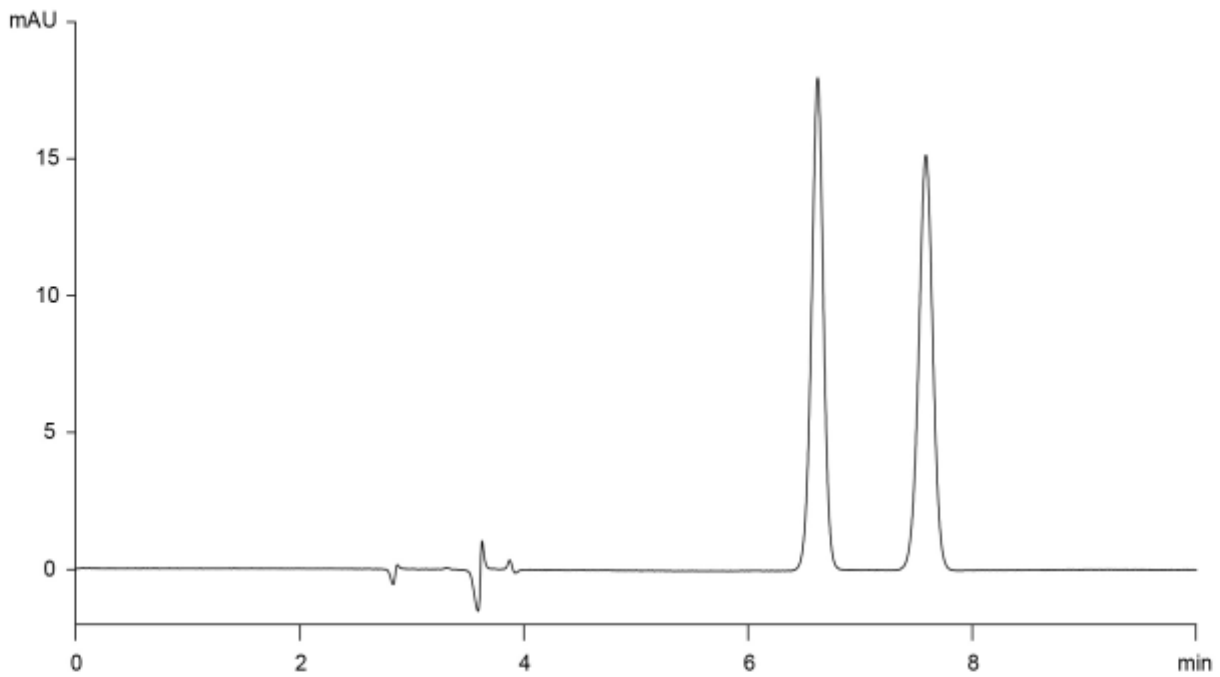


α	1.3
Rs	4.7



Column : YMC CHIRAL Cellulose-C (5 μ m)
 250 X 4.6 mm I.D.
 Eluent : *n*-hexane/ethanol/ethylenediamine (85/15/0.1)
 Flow rate : 1.0 mL/min
 Temperature : 25°C
 Detection : UV at 271 nm
 Injection : 10 μ L (20 μ g/mL)