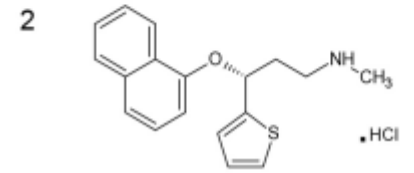
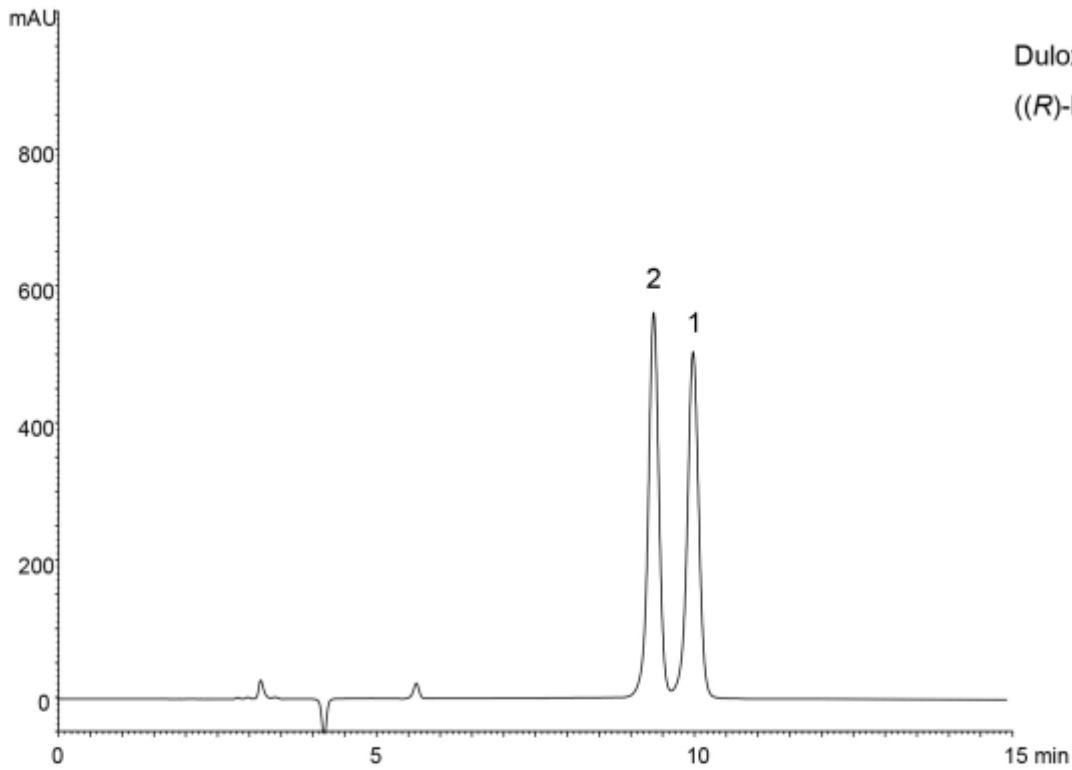


Duloxetine hydrochloride
((S)-Duloxetine hydrochloride)



Duloxetine related compound A
((R)-Duloxetine hydrochloride)



Column	: YMC CHIRAL Amylose-C (5 μ m) 250 X 4.6 mm I.D.
Eluent	: <i>n</i> -hexane/ethanol/diethylamine (95/5/0.2)
Flow rate	: 1.0 mL/min
Temperature	: 30°C
Detection	: UV at 230 nm
Injection	: 10 μ L (0.1 mg/mL)