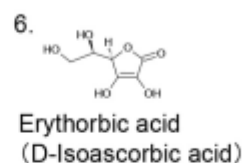
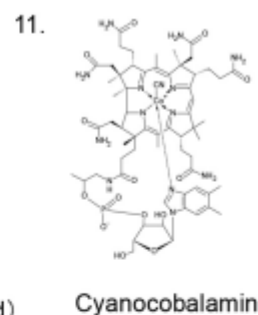
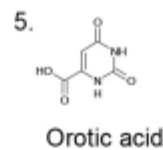
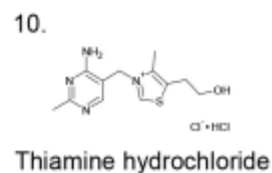
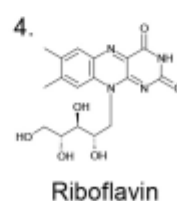
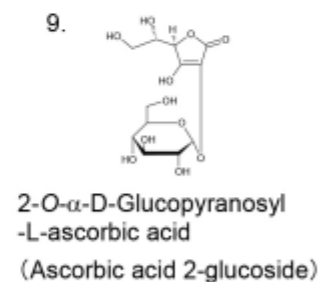
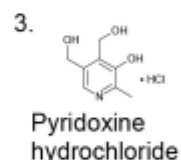
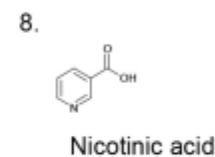
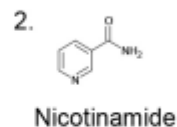
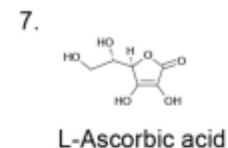
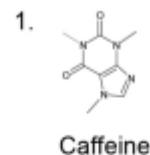
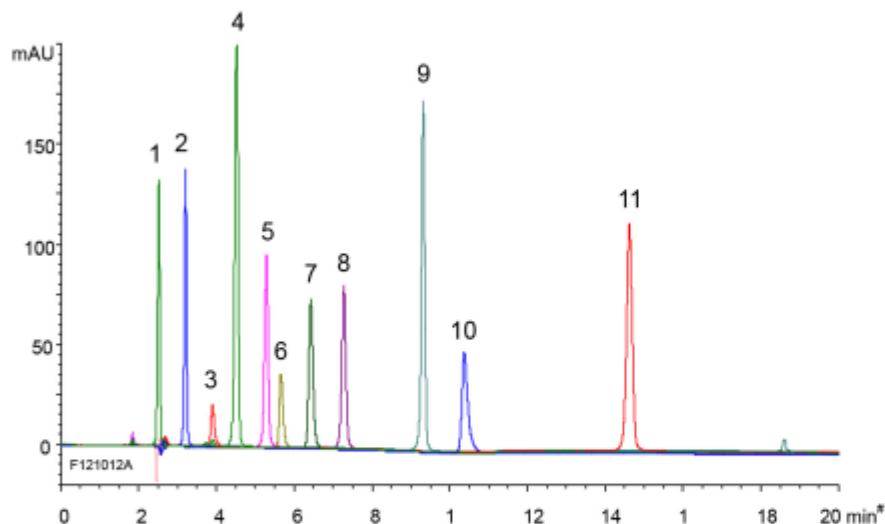
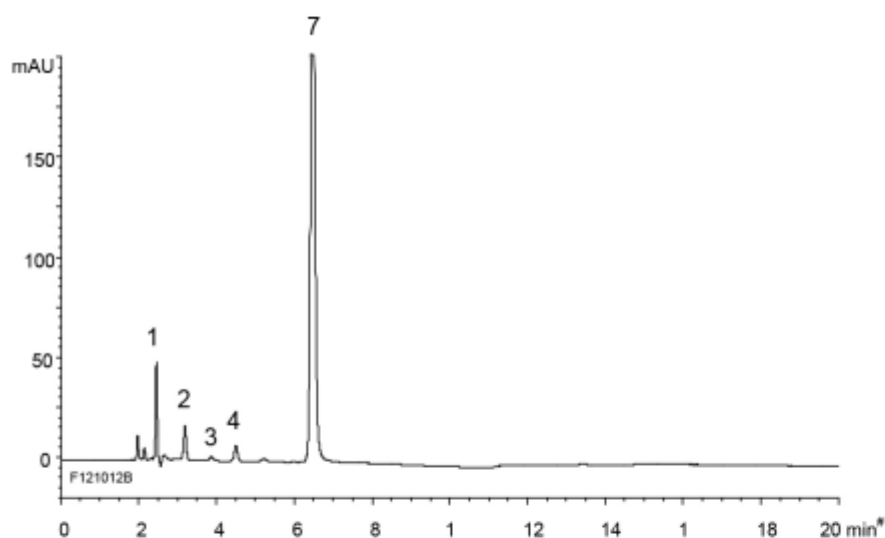


(A) Standard



(B) Energy drink



Column : YMC-Triart Diol-HILIC (5 μm, 12 nm)
150 X 3.0 ml.D.

Eluent : A) acetonitrile/water (90/10) containing 10 mM HCOOH-HCOONH₄ (pH 3.6)*
B) acetonitrile/water (50/50) containing 10 mM HCOOH-HCOONH₄ (pH 3.6)*
0-75%B (0-20 min)

Flow rate : 0.425 mL/min

Temperature : 40°C

Detection : UV at 254 nm

Injection : 4 μL

Sample : (A) Standard (50 μg/mL)

(B) Energy drink diluted 10 times with acetonitrile/water (80/20)

* pH value of 200 mM buffer solution