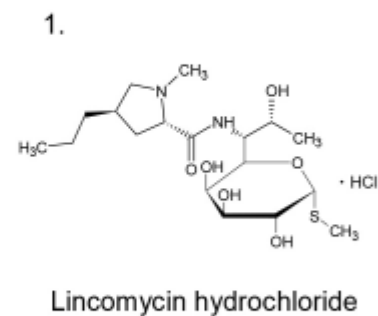
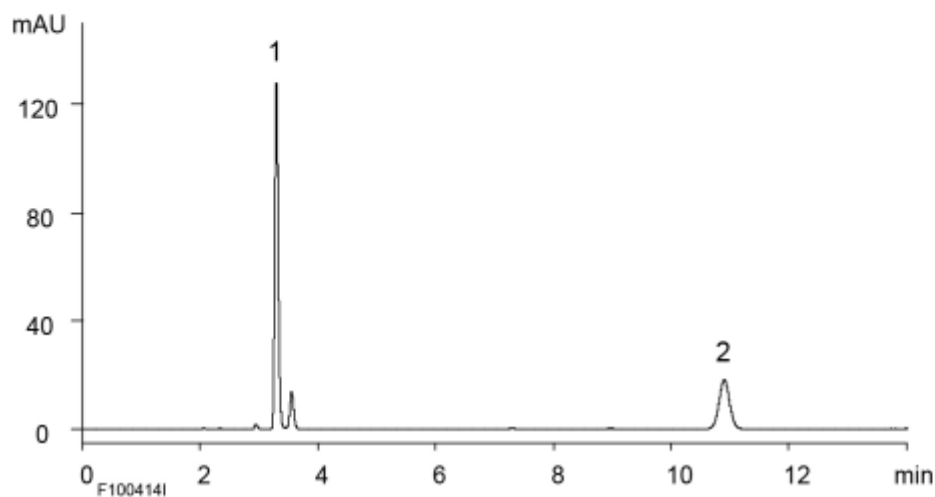


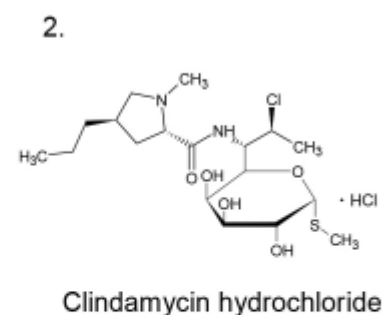
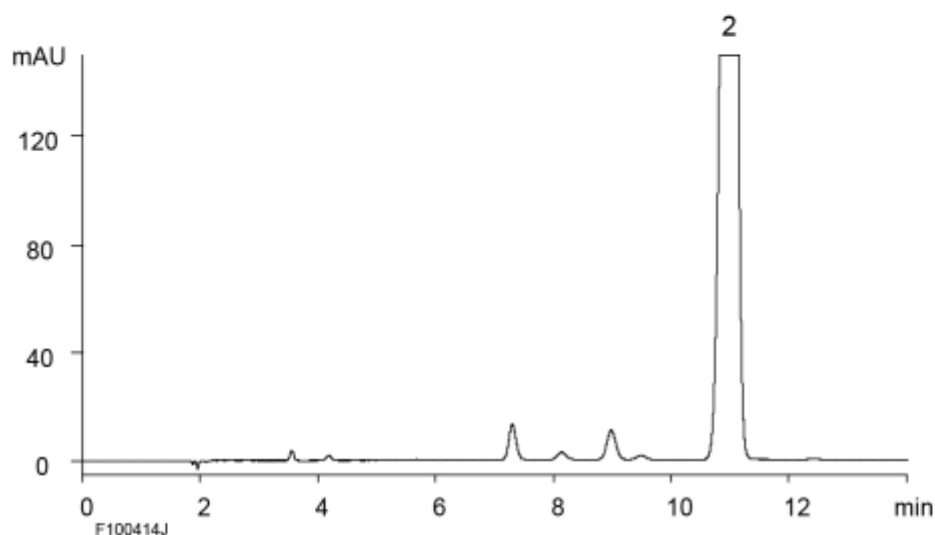
(A) Standard solution

(0.05 mg/mL Lincomycin HCl, 0.1 mg/mL Clindamycin HCl)



(B) Test solution

(5.0 mg/mL Clindamycin HCl)



Column	: YMC-Triart C18 (5 μ m, 12 nm) 250 X 4.6 mm I.D.
Eluent	: 50 mM KH ₂ PO ₄ (pH 7.5 adjusted by 8 M KOH)/acetonitrile (55/45)
Flow rate	: 1.0 mL/min
Temperature	: 25°C
Detection	: UV at 210 nm
Injection	: (A) 10 μ L (B) 10 μ L