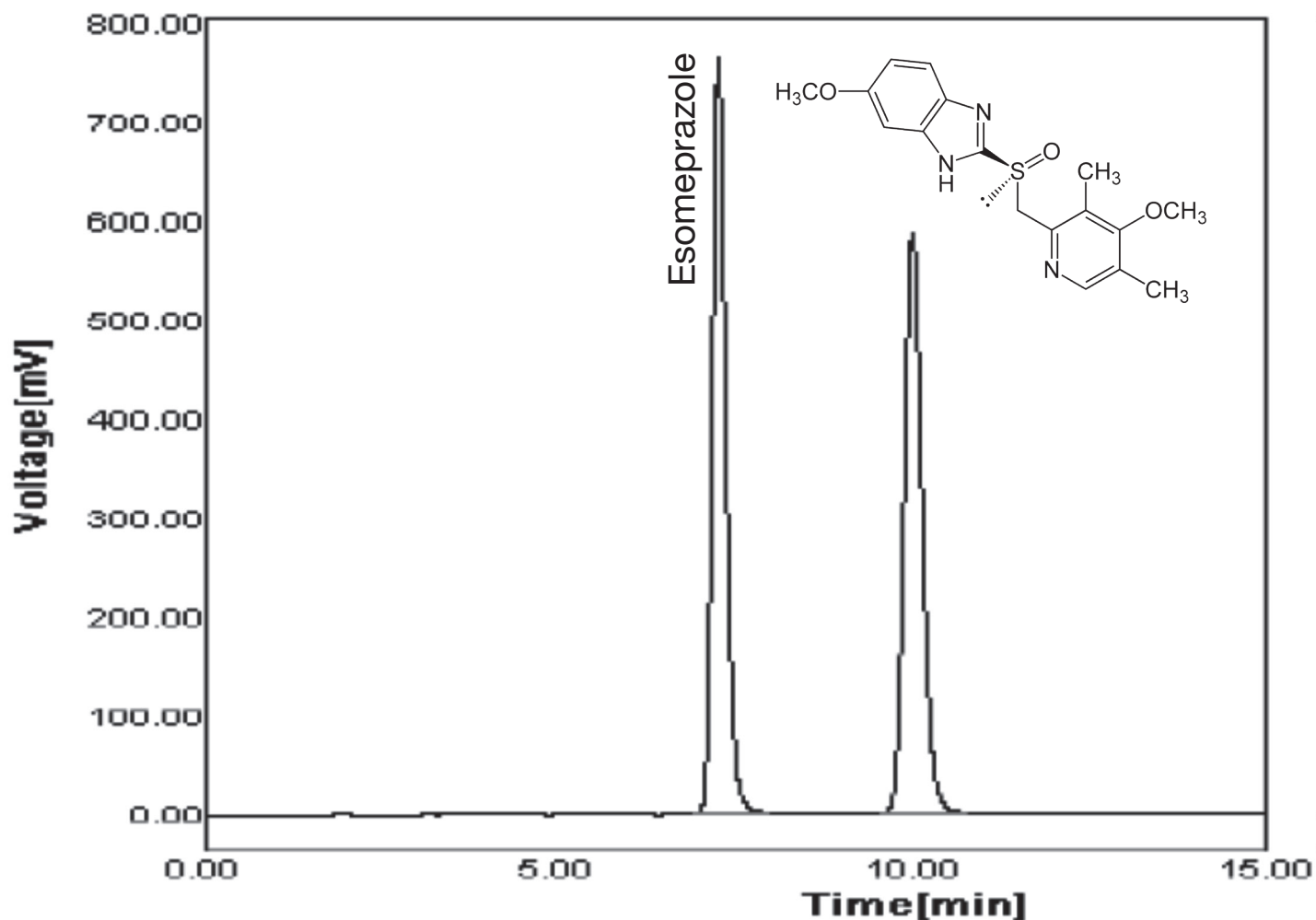


Application Note

YMC
EUROPE GMBH

Esomeprazole**



Column: CHIRAL ART Cellulose-SC 5 μ m (250 x 4.6 mm ID)
Part No.: KSC99S05-2546WT
Eluent: *n*-hexane/ethanol/diethylamine (60/40/0.1)
Flow rate: 1.0 mL/min
Temperature: 25°C
Detection: UV at 302 nm
Injection: 20 μ L (0.3 mg/mL)

**Application data by courtesy YMC India Pvt. Ltd.